



Autumn 2014

For connoisseurs of luxury travel

A Camper & Nicholson's International publication

Camper &
Nicholson's
International

YACHTING SINCE 1782

SEA +

Explore on board

Cruise through the magnificent turquoise seas of Indonesia; discover the dramatic New Zealand coastline

Behind the scenes

The jobs behind superyachts; the latest in electric propulsion; advice from the experts on your superyacht art

Issue
30

Glamour central

Bring a touch of the Hamptons into your yachting wardrobe this season; discover LA in ultimate style

STEFANO RICCI

Royal Suite Collection

WWW.STEFANORICCI.COM







ULTIMATE EVOLUTION



Official government fuel consumption figures in mpg (litres per 100km) for the Aston Martin Vanquish: urban 14.6 (19.3); extra-urban 31.0 (9.1); combined 22.1 (12.8). CO₂ emissions 298 g/km. The mpg/fuel economy figures quoted are sourced from official regulated test results obtained through laboratory testing. They are for comparability purposes only and may not reflect your real driving experience, which may vary depending on factors including road conditions, weather, vehicle load, and driving style. Energy efficiency class G.



ASTON MARTIN

THE NEW 2015 VANQUISH

New Vanquish is the culmination of an extraordinary determination to create the ultimate Grand Tourer. The latest evolutionary stride redefines perfection – boasting a new 8 speed Touchtronic III gearbox, more power, faster top speed, improved acceleration and leaner fuel economy. Performance, refinement and poise are elevated to unprecedented heights. Vanquish knows no limits.

To experience the Vanquish Volante's unique breadth of talent, visit:

www.astonmartin.com

Vanquish

Hand-crafted in Switzerland

Caliber A&S1615: manufacture movement / skeletonised / rhodium treated nickel-silver with *Haute Horlogerie* finishing: manually chamfered bridges with polished edges, *Côtes de Genève*, circular satin-finished wheels, blued screws / hand-wound / power reserve over 90 h. Functions: watch indications on three levels resulting in a powerful 3D effect / seconds dial on the bottom / hours and minutes on a sapphire crystal dial in the middle level / double power reserve indication via graduated dots printed under the top sapphire crystal. Case: 18-carat red gold / diameter 44.6 mm. www.arnoldandson.com



Inspired by John and John Roger Arnold's regulators and British skeleton clocks such as this one with a chain driven fusée, England, 1830-1845



ARNOLD & SON
SINCE 1764



INSTRUMENT COLLECTION
TIME PYRAMID

arije

PARIS

50 RUE PIERRE CHARRON +33 (0)1 47 20 72 40
30 AVENUE GEORGE V +33 (0)1 49 52 98 88
3 RUE DE CASTIGLIONE +33 (0)1 42 60 37 77

CANNES

50 BOULEVARD DE LA CROISSETTE +33 (0)4 93 68 47 73

SAINT-JEAN-CAP-FERRAT

GRAND-HOTEL DU CAP-FERRAT +33 (0)4 93 76 50 24

Contents

Up front

12

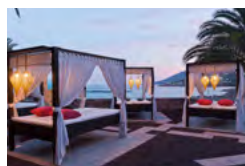
SEA+I news

The latest developments and events from Camper & Nicholsons and the world of luxury yachting

24

On charter

Highly esteemed new yacht additions available to charter along with hot destinations to consider for both the winter and summer seasons



38

Where in the world

Enlightening new hotels, spas and venues to indulge in from all four corners of the world

42

Abode

Beachfront properties in the Bahamas

Yachting



32

Yacht focus

Step aboard the recently launched Illusion from the renowned Italian shipyard Benetti

34

Gourmet gossip

SEA+I catches up with superyacht chef Pepijn Mittelmeije to discover the secrets of his success

36

Word on the bridge

Captain Veli Karacinar reveals the highlights of his career on board superyacht Sultana

64

In profile

In the first of a new series of articles, SEA+I takes a look behind the scenes at the jobs that the industry creates, starting with the new-build sector

84

Yacht construction

SEA+I visits the latest superyachts in construction at the WIDER shipyard

89

Little black book

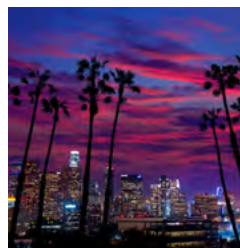
A showcase of some of the newest and most advanced yachts available to purchase, along with expert opinions on the superyacht market

Travel

48

Top five

SEA+I goes in search of old-world journeys with a 21st-century twist



50

City guide

Combine L.A.'s best kept secrets with well known tourist trails for the ultimate long weekend in the city

68

Aboard ashore

Cruise along the coastlines of New Zealand's North and South Islands for true escapism and adventure

74

Further afield

Explore the remote Indonesian archipelagos in ultimate style aboard the beautiful sailing yacht Lamima

Lifestyle

44

Homme

Add a splash of colour to your next cruise with the latest Miami pastels and Fijian prints

46

Glam

Bring a touch of the Hamptons to your yachting wardrobe this season and make waves beachside

54

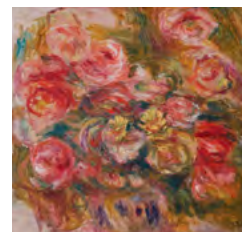
Life afloat

Explore curious corners of the globe aboard the impressive Polar Star

80

Expert opinion

Navigate the complexities of the art market in the first of a series of articles on the world of art



FOR THE NEW EMPERORS



BEIJING - Sparkle Roll

BEIRUT - Atamian

DOHA - Ali Bin Ali

DUBAI - Levant International

www.dewitt.ch - info@dewitt.ch

HONG KONG - Prince

ISTANBUL - Greenwich

LONDON - Harrods

MIAMI - Kings Jewelers

MONACO - Kronometry

MOSCOW - Mercury

NEW YORK - Cellini

PARIS - Kronometry

DEWITT

REVOLUTIONARY BY TRADITION

**Autumn 2014**

For connoisseurs of luxury travel

A Camper & Nicholsons International publication

Foreword

As the **boat show season** gets under way (Cannes, Monaco and Fort Lauderdale are currently a flurry of ocean-side activity), the **yachting world** is buzzing with anticipation regarding the latest and **greatest launches**. For those who cannot attend the shows, we take you on an instant **private tour** of some of the finest superyachts afloat here in the pages of SEA+I. From the decks of **Polar Star** to the nuances of **Lamima's** design to charter choices for winter cruising in the **Caribbean, New Zealand, Indonesia** and beyond, all your yachting inspiration is at hand.

To accompany the ultimate in yachting, we also explore the art world and speak to the **experts** about current trends in this sector; we take you on a whirlwind tour around LA; we delve into the world of **fashion** with a snapshot of colourful items to take on board your next cruise.

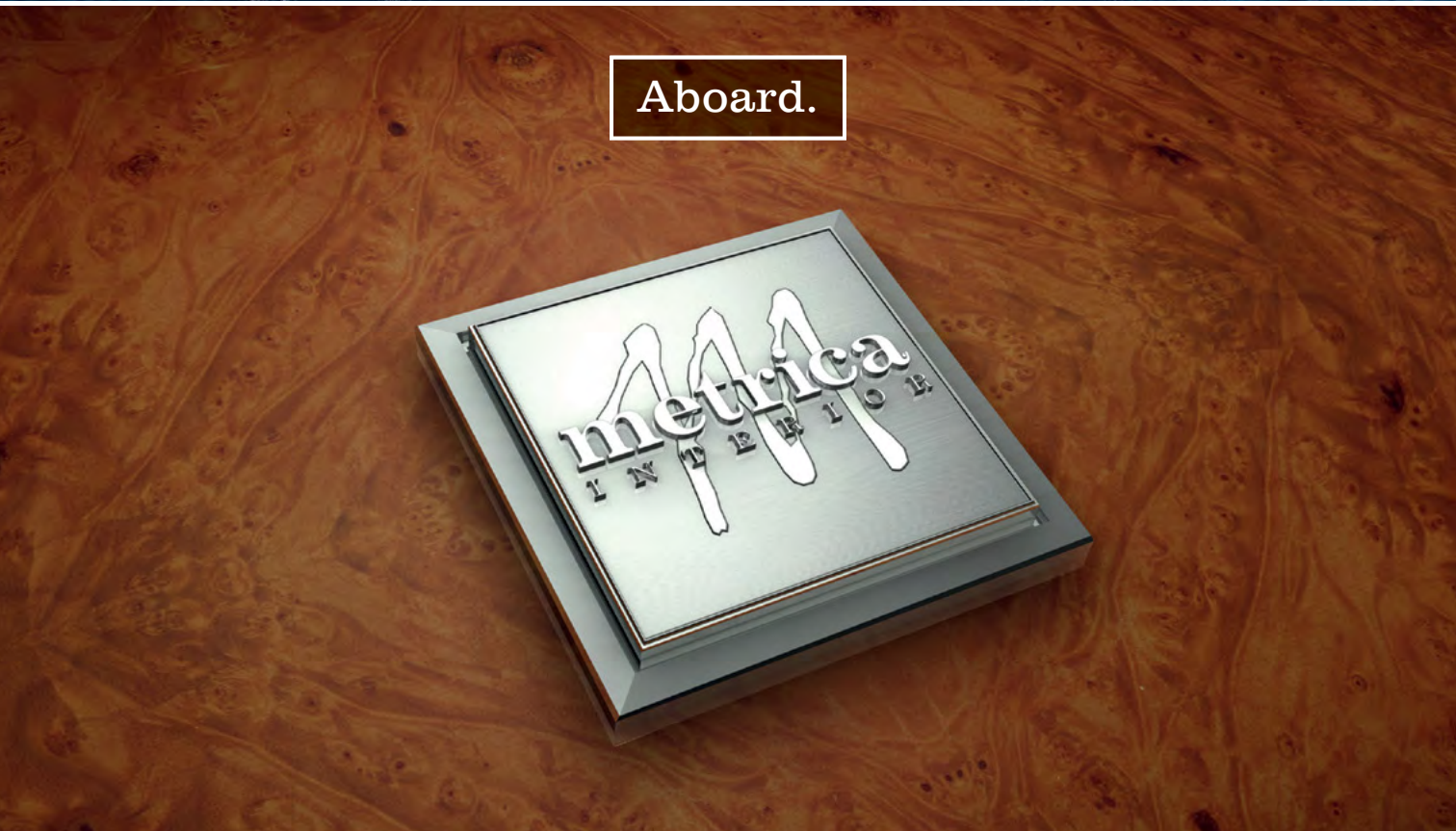
We hope that you enjoy this issue, and if it does inspire you to venture to the boat shows mentioned above, please be sure to join us at the **Camper & Nicholsons International** stands for refreshments and a chat about your latest yachting needs.



SEA+I



Aboard.



Aboard.



Published by Camper & Nicholsons International, **SEA+I** is a magazine for the world's most discerning travel connoisseurs - those who have made luxury travel a way of life. It celebrates the exceptional, the extraordinary, the priceless, the indulgent, the esteemed and the ultimate that the world can offer.

Chairman George Nicholson
Director of Publication Michael Payne
Editor Miriam Cain
Editorial Assistant Georgie Ashard
Art Director Frédéric Holtermann

Advertising
Simon Gray
sgray@camperandnicholsons.com
Marisa Ronchi
marisa.ronchi@eclectique.it
Ottaviano Iacono
ottaviano.iacono@eclectique.it

Produced by
Camper & Nicholsons International

Front cover
Photo by Jérôme Kélagopian on board Polar Star
Clothes by Stefano Ricci

Publisher
Camper & Nicholsons International
23 Avenue de France - CH-1202 Geneva

Now available for download from iTunes -
<http://itunes.apple.com> search for
SEA+I Magazine

Disclaimer
Views expressed in the pages of **SEA+I** are not necessarily those held by Camper & Nicholsons International. While all due care has been taken to ensure the accuracy and validity of all information published here, no responsibility will be taken in the event of facts, dates, times or prices quoted being amended after publication date. No part of this publication may be reproduced or used in any form without written permission from Camper & Nicholsons International Ltd.

SEA+I Magazine (ISSN Pending) is published quarterly (spring, summer, autumn + winter) by Camper & Nicholsons International, 23 Avenue de France, CH-1202 Geneva, Switzerland and distributed in the USA by Mail Right Int, 1637 Stelton Road B4, Piscataway, NJ 08854. Periodicals Postage Paid at Piscataway, NJ and additional mailing offices.

Postmaster
Send address changes to **SEA+I** Magazine
c/o Mail Right International Inc. 1637
Stelton Road B4, Piscataway NJ 08854

C&N trademarks are registered
marks used under licence by CNI.

© Camper & Nicholsons International Ltd 2014
www.camperandnicholsons.com

GB£ 15.00 / € 20.00 / US\$ 24.00

Camper & Nicholsons International

EUROPE

Antibes, France
12 Avenue de la Libération - 06600 Antibes
T +33 (0)4 92 91 29 12
F +33 (0)4 92 91 29 00
E antibes@camperandnicholsons.com

Geneva, Switzerland
23 Avenue de France - CH-1202 Geneva
T +41 223 47 27 08
F +41 223 47 27 09
E geneva@camperandnicholsons.com

London, England
15 Sackville Street - London W1S 3DJ
T +44 (0)20 7009 1950
F +44 (0)20 7629 2068
E london@camperandnicholsons.com

Monte Carlo, Monaco
Administration
57 Rue Grimaldi - MC 98000
Sales office
42 Quai Jean-Charles Rey - MC 98000
T +377 97 97 77 00
F +377 93 50 25 08
E monaco@camperandnicholsons.com

Palma De Mallorca, Spain
Club de Mar - 07015 Palma de Mallorca
T +34 971 40 33 11
F + 34 971 40 14 12
E palma@camperandnicholsons.com

AMERICA

Miami, USA
1001 Brickell Bay Dr. - Suite 2006 - Miami, FL 33131
T +1 305 604 9191
F +1 786 433 8800
E miami@camperandnicholsons.com

Fort Lauderdale, USA
801 Seabreeze Blvd - Fort Lauderdale - FL 33316
T +1 954 524 4250
F +1 954 524 4249
E fortlauderdale@camperandnicholsons.com

New York, USA
445 Park Avenue, 9th Floor, New York, NY 10022
T +1 212 829 5652
F +1 212 829 5672
E newyork@camperandnicholsons.com

Newport, USA
1 Washington Street - Newport - RI 02840
T +1 401 619 00 75
F +1 401 619 10 69
E newport@camperandnicholsons.com

Palm Beach, USA
450 Royal Palm Way - Palm Beach - Florida - FL 33480
T +1 561 655 2121
F +1 561 655 2202
E palmbeach@camperandnicholsons.com

Great Lakes, USA
30099 South River Road - Harrison Township - MI 48045
T +1 586 690 8009
F +1 586 783 9818
E greatlakes@camperandnicholsons.com

GLADWELL & PATTERSON

— experts in fine art since 1752 —



CLAUDE MONET "POMMIERS EN FLEURS" [Contact us to arrange a viewing](#)

Painting perfection. On land, or at sea.

With 262 years' experience at the forefront of our field, we are in the strongest possible position to navigate our clients - first-time buyers, seasoned collectors, private individuals, families and corporations alike - through the complexities of the art market to a position of informed decision-making.

gladwellpatterson.com

The latest news from
Camper & Nicholson's International
and the world of luxury yachting

News+



CAMPER & NICHOLSON'S NEW INVESTORS ARE COMMITTED TO GROWING AND DEVELOPING THE CAMPER & NICHOLSON'S BRAND

NEW OWNERSHIP

Camper & Nicholson's International is pleased to announce that the company is now under the new ownership of Colosseum Services SA. It is the start of a new and exciting chapter for the company and 'business as usual' for C&NI, with a growing order book for all divisions in the company. The company continues to prosper and flourish, representing the very best within the yachting industry. Colosseum Services SA is committed to growing and developing the Camper & Nicholson's International brand, both companies sharing similar values.

NEW OFFICE

The Sales and Charter offices of C&NI Monaco have relocated to new premises on the port of Fontvieille, Monaco, at quai Jean-Charles Rey, near the main breakwater jetty and close to the heliport. The Monaco Administration office stays located at the Panorama building on rue Grimaldi.

RECENTLY LAUNCHED

Among the fine new yachts that took to the water this summer were the 58m (190') Illusion I from the Italian yard Benetti, and the 54.5m (178'9) Forever One from the ISA yard. Both successful and stunning builds, these projects were expertly brokered and overseen by Camper & Nicholson's Alex Lees-Buckley in the case of Illusion I (for a repeat client), and Fernando Nicholson in the case of Forever One (also for a repeat client).

As Benetti's latest masterpiece, everything about Illusion I has been carefully crafted to offer the finest in superyachting. Her contemporary interior incorporates exotic materials such as parchment, walnut, coconut weave and mother-of-pearl. She has an enormous master suite, a full-width VIP stateroom, ample dining and relaxation areas, a vast sun deck, state-of-the-art communication and audiovisual equipment, and for maximum comfort, her build incorporates the latest



technology in stability and noise reduction. Illusion I is available for charter in the Caribbean this coming winter season.

Parallel in finish, detailing and impressive features, Forever One was built by International Shipyards Ancona, Italy, and designed by the Naval Architect Horacio Bozzo of Axis Group Yacht Design. One of her most notable features is a large window in her transom, which floods a beach club lounging area with natural light and allows guests to enjoy sea views while underway.

Camper & Nicholson's would like to congratulate both new owners on their finished vessels and no doubt with such craftsmanship, impeccable design and impressive features, the two yachts will be a hit on the high seas.

CAMPER &
NICHOLSONS' US
BROKERAGE TEAM
WELCOMES TWO
NEW BROKERS



**A JEWEL IN
THE CROWN**

Yacht Club de Monaco's much anticipated new premises were opened by HSH the Sovereign Prince Albert II on 20th June in front of over 3,000 guests.

Cleverly designed to resemble the deck terraces of a yacht, the stunning new structure houses its new Clubhouse along with an array of fantastic facilities, including restaurants, bar areas, meeting rooms, a swimming pool and a 150-space car park for its 1,300 members. It also has a marina that can accommodate up to 26 superyachts of 25m-60m (82'-196') in length, a pontoon for tenders and a terminal for charters. Bernard d'Alessandri, Secretary General of the Club, comments on the new premises; 'The relationship between superyachts and Monaco has always been a strong one that dates back to Prince Rainier III. Today's new landmark building, commissioned by HSH Prince Albert II,

is both a testimony to that heritage and a projection into the future to reinforce Monaco's position as the worldwide capital of yachting. It acknowledges the essential connection that the Principality has with the sea and is a witness to Monaco's excellence in all yachting related aspects – not just the world of competitive sailing, as the majority of yacht clubs are known for, but as an all-encompassing yachting centre for lovers of the seas and boats, whether sail or motor, whether classic or modern.'

The project took a total of 14 years from the initial design to the inauguration that took place in June. It is aimed at

being not only a striking architectural landmark in Monaco and beyond, thanks to the talent of famed architect Sir Norman Forster, but also a bustling hub, catering to the needs of the Club's members and the whole yachting community, in a unique and exquisite environment. The Yacht Club de Monaco created the concept La Belle Classe with this offering in mind, and the building's design as a grand vessel that opens onto the Principality, the port and the sea acknowledges perfectly that international scope. One should also keep in mind that more than 100 nationalities are represented among the Club's members.



In good company+

**BROKERAGE
TEAM EXPANSION**

Camper & Nicholson's Palm Beach office sees Brendan Roney and JP Shipman join their ever-expanding brokerage team. Roney has been based in Florida for the past 16 years and spent many years as a captain on a variety of sail and motor yachts. It was on the decks of these yachts that he learnt that no two vessels are the same and he has developed a deep understanding also for what different models have to offer - an invaluable insight that now helps him match clients with the right yacht for their needs. Shipman is also an avid yachtsman with over four decades of offshore maritime experience, both in captain positions, buyer representation and yacht management - all of which provides him with ideal knowledge for his new position as a yacht broker.

SUPERYACHT SALES

Camper & Nicholsons has experienced one of its busiest summers for brokerage. In July alone, we reported six sales with a collective value of €24,592,596 (US\$32,790,128). Not bad going for a traditionally quiet month in sales. What's more, we have been enjoying executing deals in-house, and have recently celebrated our third in-house sale in less than a month.

As we head into autumn, we take a look back at 2014's sales so far and decipher more good news - figures for 2014's first and second quarters show the industry as a whole is blooming. The total value of the brokerage market for the first and second quarters was in excess of 1.6 billion Euros (2.11 million USD) and approximately 258 yachts were sold, showing a 25% increase in sales compared to the same period last year.

At the end of the second quarter, 1,946 yachts over 24m (79') were recorded on the market. Figures reveal that motor yachts continue to dominate the market, with sailing yachts accounting for 15% of the market and 9% of the yacht sales so far this year.

When comparing the ranges and sales of yachts priced in USD against those priced in Euros for the first half of the year, figures on the whole showed average asking prices were more competitive

— **THE PAST FEW MONTHS HAVE SEEN CAMPER & NICHOLSONS INTERNATIONAL NEGOTIATE DEALS ON A NUMBER OF FANTASTIC VESSELS. THE FOLLOWING ARE JUST A SELECTION OF YACHTS SOLD TO DATE IN 2014**

Sales+



— **PESTIFER 65m (213'3) Feadship**

than the same period last year. Shorter recorded selling times also imply that buyers are moving quickly and are not afraid to commit to a sale if it is competitively priced. However, there are also signs in some sectors that the best deals are gone, or are going, and therefore better value is returning for sellers.

Statistics also demonstrate that the European market is beginning to catch up with what was an already very active US market, especially as Asian buyers are tending to go directly to Europe to purchase. With such an active and competitive market, there is no denying the outlook for this autumn remains very positive.



— **LARISSA 38.63m (127'11) Sunseeker**



— **MARIELLINA GIO GIO 34m (111'5) from Leopard**



— **RED SKY 28.1m (92'2) Couach Yachts**



PARSIFAL IV 56m (183'8) Perini Navi



ODYSSEY 41.1m (134'1) Feadship



WILLIAM TAI 40.7m (133'5) Royal Huisman



HERITAGE III 38m (124'8) from Broward



NORTHERN SPIRIT 37m (121'4) Perini Navi



MATANTHAR 30.7m (100'8) from Heesen Yachts



PALOMA 30m (98'5) Sunseeker



ELEVEN ELEVEN 25.84m (83'11) from Ocean Alexander



FIRST EPISODE 25m (82') Amer per Mare

Show + tell+

CAMPER & NICHOLSONS WILL BE HOSTING CLIENTS AND FRIENDS AT A NUMBER OF EVENTS THROUGHOUT THE MONACO YACHT SHOW IN PARTNERSHIP WITH LEADING BRANDS C&N MARINAS, WIDER YACHTS, ASTON MARTIN, ELITE TRAVELER, BEAUCHAMP ESTATE, GLADWELL & PATTERSON, ARC & CO, STEFANO RICCI, PIPER HEIDSIECK, CASSILLERO DEL DIABLO, AND ABN AMRO

MONACO

From 24 - 27 September, Port Hercules will once again be bursting with the world's best and largest yachts for this year's Monaco Yacht Show. Adding to the impressive boats on display will be a fine selection from the Camper & Nicholsons fleet, including the celebrated 63.4m (208') Polar Star, the striking 51.7m (169'7) aluminium cruising sloop Red Dragon, the spacious 47.55m (156') Princess Too, the stunning 47m (154' 2) Yalla and the German-built 44.9m (147'3) Bravado.

Along with yachts for sale, C&NI will have its well-equipped stand at the show with state-of-the-art interactive screens, iPads showing off the yachts available with C&NI, and the ultimate necessity - air conditioning. The stand will be a quiet haven for clients to retreat to during the busy days of the show.

What's more, C&NI will be putting on its usual social events during the week including a soirée



RED DRAGON 51.7m (169'7)



POLAR STAR 63.4m (208')



PRINCESS TOO 47.55m (156')

at the brand new Monaco Yacht Club, cocktails and canapés on board the yachts, and crew parties for the hard-working staff at the end of the show.

VIP treatment for C&NI clients also extends to privately chauffeured cars from Aston Martin and tenders supplied by Wider Yachts and Pirelli available to

clients at a moment's notice, transporting them to and from, as well as around the show and between the yachts, whenever they wish.



CANNES

The 37th Cannes Yachting Festival certainly lived up to its reputation. Widely regarded as one of Europe's leading yacht shows, more than 500 new vessels and 50 previously owned yachts packed into the Bay of Cannes for the annual event. Visitors to the show enjoyed the major renovations to the marina, fresh from an extensive refurbishment, which was undertaken especially for the Festival.

As usual, Camper & Nicholsons contributed substantially to proceedings adding to the fine yachts on display, and providing VIP services to our clients. Our strong contingent of brokers were on hand throughout the show providing their expertise to those who attended the show.

BEAUCHAMP ESTATES

A photograph of a luxurious outdoor pool area. In the foreground, there are several lounge chairs with blue cushions and a small wooden table. A large palm tree trunk is prominent in the center. The pool is a vibrant blue and extends towards the horizon, where it meets the sea. In the background, there are mountains and a clear blue sky. The overall scene is bright and sunny, suggesting a high-end vacation spot.

YOUR LUXURY REAL ESTATE AGENCY
FROM ST TROPEZ TO MONACO & IN PROVENCE

SALES & RENTALS

**BEAUCHAMP
ESTATES**

WWW.BEAUCHAMP.COM

19, RUE DES ETATS UNIS, CANNES - TEL : +33 (0)4 93 94 45 45 - INFO@BEAUCHAMP.COM

Show + tell+



REMEMBER WHEN

—
CAMPER & NICHOLSONS IS ALL SET TO SHOWCASE A LINE-UP OF SIX OF ITS FINEST YACHTS DURING THE FORT LAUDERDALE INTERNATIONAL BOAT SHOW

—
FT. LAUDERDALE SHOW

America's south east coast is gearing up to host what has become the world's largest yacht show - the Fort Lauderdale International Boat Show. Held between 30 Oct and 2 Nov, the show will display a vast selection of tenders and superyachts, as well as everything you could desire from the nautical world. Camper & Nicholson

is all set to showcase a line-up of six of its finest yachts during the show, including the 5.1m (171') Gravitas; the 48.7m (162') Remember When, the 38.16m (125') Northlander, the 33.5m (109'1) Casual Water, the 30.4m (99'8) Sofia II and the 26.6m (87'3) Patriot. As well as displaying some of our best superyachts, C&NI will be hosting clients in ultimate style at its VIP



terraced area right at the heart of the event. As the show area is palatial, Camper & Nicholson's have gone the extra mile to provide VIP transportation in and around the show, and after a long morning viewing yachts, clients can enjoy lunch at the VIP Café inside the Bahia Mar Hotel, or a cocktail with your broker as you discuss any potential offers.

Calendar



10

27 September - 5 October

Les Voiles de St Tropez
St Tropez, France

1 - 6 October

Genoa International
Boat Show
Genoa, Italy

15 - 19 October

Barcelona International
Boat Show
Barcelona, Spain

30 October - 3 November

Fort Lauderdale
International Boat Show
Fort Lauderdale, USA

11

13 - 15 November

Showboats International
Boys & Girls Club
Rendezvous
Bahamas

21 - 23 November

Formula 1's Etihad Airways
Abu Dhabi Grand Prix
Abu Dhabi, UAE

30 November - 6 December

King's Cup Regatta
Phuket, Thailand

12

4 - 7 December

Art Basel Miami
Miami, USA

5 - 11 December

Antigua Charter Yacht Show
Antigua

6 - 14 December

Salon Nautique
International de Paris
Paris, France

16 - 18 December

Asia Superyacht
Rendezvous
Phuket, Thailand

01

8 - 11 January

Phuket International
Marine Expo
Phuket, Thailand

10 - 18 January

London Boat Show
London, UK

17 - 25 January

Boot Dusseldorf
Dusseldorf, Germany

29 January -

1 February
St. Moritz Polo World Cup
St. Moritz, France

29 January - 3 February

Grenada Sailing Festival
Grenada

02

12 - 16 February

Miami International
Boat Show
Miami, USA

17 - 20 February

Mumbai International
Boat Show
Mumbai, India

03

3 - 7 March

Dubai International
Boat Show
Dubai, UAE

10 - 13 March

MIPIM Real Estate
Conference
Cannes, France

11 - 14 March

Loro Piana Caribbean
Superyacht Regatta &
Rendezvous
Virgin Gorda

26 - 29 March

Palm Beach International
Boat Show
Palm Beach, USA

27 - 30 March

St. Barths Bucket
St. Barths

29 March

Bal de la Rose
Monaco

For further information on chartering a yacht for the above events, or to attend a boat show with your broker, please contact your nearest Camper & Nicholson's broker, see page 10 or visit www.camperandnicholsons.com

PLANNING AHEAD

Those looking ahead to spring 2015 should talk to their broker about the new Ermioni Marina in Greece. Located just two hours from Athens by hydrofoil, Ermioni Marina gives yacht owners ready access to the legendary blue waters of the southern Aegean including Hydra, Dokos and Spetses. Located on Peloponnese peninsula, the luxury marina is set to open in spring 2015 and will offer 199 berths in total as well as an enticing selection of its own bars, restaurants, shops, swimming pool and spa.



CYPRUS'S WELL-DRESSED WATERFRONT

June brought about the completion of the hotly anticipated Limassol Marina's shoreside facilities. The new bars, restaurants and elegant promenade attracted a crowd of 20,000, eager to sample its delights. The marina's fine selection of designer boutiques, as well as the cultural centre and the Yacht Club also provides ample reason to step ashore. With labels such as Ralph Lauren, Paul Smith, Nicole Farhi and Armani Style setting up shop, Limassol Marina is set to become Cyprus' best-dressed waterfront.

For further information on any of the marinas and the privileged access and benefits on offer to Camper & Nicholsons clients please contact your Camper & Nicholsons broker, see page 10

Wavelength+



WINTER IN EUROPE

Offering secure locations, good international connections, competitive seasonal rates, and top-notch facilities and service standards, marinas in the eastern Mediterranean have become very popular winter berthing destinations.

In the heart of Montenegro's Budva Riviera nestles one of the Adriatic's most handsome nautical destinations, Dukley Marina. The fully equipped international port has on-site Police, Customs and Harbour Master.

Sani Marina in the Aegean and Cesme Marina in Turkey are wonderful destinations, providing a good selection of different size berths and fantastic onshore facilities. State-of-the-art Palmarina, Bodrum is the only marina in Turkey to offer secure moorings to superyachts. Its world-class facilities include a Billionnaire Club, plus the world famous Nobu and Cipriani restaurants.

Another top choice, but a major contrast in style, is Athens Marina which offers unrivalled access to technical services, with nearby shipyards that cater for the biggest of superyachts.

And those on the hunt for winter deals and a splash of culture should head to Malta, where the Grand Harbour Marina will be offering one month's free winter berthing if you book for two months or more this season.




AS THE DAYS GROW SHORTER AND THE NIGHTS GET COLDER, SEA+I LOOKS FOR THE BEST HIDEOUTS FOR YOU AND YOUR PRECIOUS LOAD TO RECUPERATE FROM THE BUSY, HOT SUMMER

ABU DHABI'S 52-WEEK ATTRACTION

Abu Dhabi's impressive Yas Marina is gearing up for another busy race week this November. Every year crowds flock to the area for Formula 1's Etihad Airways Abu Dhabi

Grand Prix and with this year's event set to be bigger than ever before, Yas Island has been getting itself ship shape. Now boasting seven new licensed food and beverage venues offering large terraces with panoramic

views of the marina, a pedestrianised promenade, an interactive musical fountain and a children's playground, it looks like Yas Marina will become just as popular with visitors for the remaining 51 weeks of the year.

An aerial night photograph of Athens Marina, showing a long pier with numerous yachts docked. The marina is illuminated with warm lights, and the surrounding city of Athens is visible in the background with its lights and a highway interchange. The sky is a deep blue with some light clouds.

Athens Marina, a **private haven** for superyachts located at the heart of yachting in Greece

Situated on Faliro Bay, the Ancient city centre of Athens is only a few miles away, with over 3,000 Greek islands within a short cruising distance. With berths up to 130m, 24/7 security and controlled entry points, Athens Marina is the ideal base for yacht owners and guests seeking the highest levels of service and privacy.

athens marina
THE MEGA YACHT MOORING

www.cnmarinas.com/athensmarina

**Camper &
Nicholsons
Marinas**

YACHTING SINCE 1782

Crew coach column+

THE LATEST
NEWS FROM
C&N'S CREW
COACH



NEW ONLINE LEADERSHIP COURSE

A third new leadership course 'Getting to Yes' was added to Camper & Nicholson's online training resource library this season, giving the captains of our managed and charter yachts invaluable resources to help manage their crew.

Incorporating powerful negotiating, relationship building and conflict resolution skills, this course was created by our in-house Crew Coach, Alison Rentoul and

helps crew keep the peace and maintain a harmonious and productive working environment on board.

Founded on the psychology of why people don't always get along and what can be done about it, this course covers common sources of conflict on board with practical techniques to address and how to resolve them. It also clarifies legal obligations with respect to bullying and harassment on board as outlined in the new Maritime



Labour Convention regulations.

Captains of our fleets receive free access to this extensive online leadership training library plus unlimited leadership coaching as part of our commitment to providing the highest possible levels of crew performance for our owners and guests.

For further information on Camper & Nicholson's Crew Coach Programme, please contact your nearest broker, see page 10.



YACHT INSURANCE BROKERS

"COMPREHENSIVE COVER AT COMPETITIVE PREMIUMS
AND THE VERY BEST SUPPORT. STURGE PROVIDES AN
INSURANCE SERVICE SECOND TO NONE"



STURGE TAYLOR & ASSOCIATES OFFICES

SOUTHAMPTON, UK

Notebeme House
84 High Street
Southampton, SO14 2NT
T: +44 (0)2380 222666
F: +44 (0)2380 051381
E: info@sturgetaylor.com

LONDON, UK

4th Floor
108 Fenchurch Street
London, EC3M 5JR
T: +44 (0)207 702 2202
F: +44 (0)207 900 3709
E: info@sturgetaylor.com

ANTIBES, FRANCE

Sturge International Services Sarl
15 Rue Sadi Carnot
06600, Antibes, France
T: +33 (0)4 93 95 22 95
F: +33 (0)4 93 95 22 00
E: sturgeyot@aol.com

www.sturgetaylor.com

The winter season will soon be upon us and Camper & Nicholson's International has the perfect antidote - superb yachts available for charter in exotic locations. For those planning to hit the slopes rather than the waves this winter, we also bring you a taste of the best cruising grounds for the **summer** so that you can plan ahead for next year

On charter

OCEAN VICTORY

A superyacht in every aspect - size, design and performance - Ocean Victory is one of the largest Feadship's ever built. She boasts large volume and has been built to the highest specifications. Her elegant interior is the fine work of renowned Parisian designers Cabinet Pinto and features

the invaluable input of the late Alberto Pinto himself. Ocean Victory has many notable features but perhaps one of her most impressive is her full onboard spa, which consists of a sauna, hammam, hair salon and massage room. Other luxurious features include a dedicated cinema room, a gymnasium with a platform

to the sea, a touch-and-go helipad, and an endless array of tenders and water toys. Whatever you choose, one thing is certain - aboard Ocean Victory you will never be bored.

Length 75.75m (248')
Guests 12
Winter Please enquire
Prices from Please enquire



ILLUSION I

The stunning, Italian built Illusion I is another welcome addition to the charter fleet. Her stylish, contemporary interior boasts full height windows throughout the main deck area, which is where you will also find the impressive master suite. Further accommodation includes a full-width VIP stateroom and four large additional staterooms. She has an abundance of dining, entertainment and relaxation areas, including a full bar and beach area on her lower deck, and a stunning sun deck with mosaic Jacuzzi, large sunbathing loungers, bar area and barbecue. For further information on this magnificent new Benetti, see page 32.

Length 58m (190'3)
Guests 12
Winter Caribbean & the Bahamas
Prices from US\$350,000 per week



LAMIMA

Offering the charm of an Indonesian two-masted phinisi with the opulent luxuries of modern yacht design, Lamima is a nautical masterpiece. The stunning interior is contemporary yet welcoming. Beautiful Asian influences are apparent throughout her artwork, furniture and fittings. Indoor spaces are open and relaxing, and she comfortably accommodates 14 guests in

seven large staterooms, all of which boast en suites. Up on deck there is ample space for sunbathing, perfect for those looking to relax or for al-fresco dining. See page 74 for further information on this outstanding addition to the charter fleet.

Length 65.2m (213'9)
Guests 14
Winter Indonesia
Price €190,000 per week (all-inclusive)

**ANTARA**

Stepping inside Antara provides a real treat for those who appreciate comfortable cruising in the utmost style and luxury with cosy warm leather accents and caramel-coloured satin teak. Accommodating up to 10 guests, her sleeping arrangements are ideal for family and friends. Her elegant profile displays the signature lines of a classic Perini Navi and

her sophisticated décor and exhilarating sailing performance all combine to provide the ultimate yacht charter, be it in the jet-set Mediterranean, or the crystal clear waters of the Caribbean.

Length 46.5m (152'6)

Guests 10

Winter Caribbean

Prices from

US\$105,000 per week

**PENNY MAE**

The unique tri-deck motoryacht Penny Mae is designed for cruising in absolute comfort. Further to a recent refit, Penny Mae is now available for charter in the Bahamas this autumn, before she sets off on a world wide tour beginning with

Central America and Costa Rica, followed by French Polynesia.

Length 42m (138')

Guests 12

Winter Autumn/Winter
Bahamas/ Central America

Prices from

US\$125,000 per week

**ALLURES**

Conceived as a performance sailing yacht, Allures provides high levels of comfort and safety. She is easy to handle and her shallow draft allows her access to many waters. Cruising at speeds of over 20 knots, she provides a sturdy, yet luxurious and spacious platform.

Length 30.5m (100')

Guests 11

Summer Mediterranean

Prices from

€50,000 per week

SKAZKA

A beautiful example of Azimut styling and technological prowess, Skazka offers wide, open deck spaces, a spacious interior and an impressive top speed of 31 knots. Everything about Skazka is sleek and stylish, especially her contemporary interior which incorporates unique features such as a beautiful glass topped bar in her

salon. Her great outdoor deck houses a large sunning area with barbecue and loungers. She also has a big bathing platform, which provides access to an array of water toys.

Length 29.8m (97')

Guests 7

Summer Mediterranean

Prices from

€35,000 per week



Despite most yachts being out on the water during the busy summer season, Camper & Nicholson's charter fleet grew considerably with the addition of eight new listings. The following is just a sample of what is on offer in the Caribbean, Bahamas, Central America, Southeast Asia and the Mediterranean

Where to cruise - Winter

Whether you are planning a charter for this winter season or for next summer, SEA+I recommends the best cruising grounds for the season



The **Caribbean** long ago established itself as the ideal destination for winter cruising. With its clear waters, mesmerising marine life, hot temperatures and picture-perfect beaches, it is easy to understand how it has come to claim its 'winter destination' crown. From the scalloped coastlines and white-sand beaches of the **Virgin Islands** in the north, to the chic **Leeward Islands** and the long chain of **Grenadine Islands** in the south, the Caribbean Sea hosts a fascinating history and welcoming locals.

Further north, the **Bahamas** lie just off the Florida coast and continue 600 miles across to the Caribbean. With over 700 islands and nearly

2,500 cays, the shallow blue waters are home to a plethora of dive sites and fishing grounds.

For the adventurous, the varied and wonderful coastlines of **Australia** are a paradise of dense rainforests, sophisticated cities and glorious beaches. The urban bright lights, desert wildernesses, mountainous landscapes and tropical islands provide a varied and vibrant backdrop for an alternative charter in the this hemisphere.

Lying far away in the **South Pacific**, the two islands of **New Zealand** offer equal appeal. A magical place, the islands have long been a yachtsman's paradise with some of the world's finest sailing waters and a superb

choice of anchorages.

Cocooned from the rest of the world, the islands of **French Polynesia** are a paradise of turquoise lagoons, lush scenery and deserted beaches marooned in an idyllic ocean. The archipelago is made up of more than 130 islands scattered over five archipelagos in three main island groups - all of which are ideal for sailing.

The **Seychelles** are made of 115 coral outcrops lying south of the equator in the **Indian Ocean**. A veritable Garden of Eden, almost half the land has been designated a national park, nature reserve or protected area. Island hopping onboard a yacht provides the perfect opportunity to experience the subtle changes between

pristine landscapes.

The slender coral-island chain of the **Maldives** is strewn across the shimmering waters of the Indian Ocean like a string of pearls. Only 200 or so are inhabited, and each gem of an island sits in its own shallow lagoon, encircled by coral reefs keeping the Indian Ocean at bay. A haven for divers and watersports enthusiasts.

The cruising grounds of **Southeast Asia** are a hauntingly beautiful fusion of sleepy villages, sacred cities, golden pagodas and mist-shrouded jungles. Wonderfully diverse, with fascinating, colourful cultures, customs and fantastic cuisine, the coastlines of **Thailand**, **Malaysia** and **Indonesia** flourish with ancient traditions and cultures.

Where to cruise - Summer '15



The vast and varied cruising grounds of the **West Mediterranean** are the most popular, and therefore some of the busiest during the peak season so it is worth booking ahead. Effortless charm and elegance are ever present along the shores of the **Côte d'Azur, Amalfi Coast, Balearics, Corsica** and **Sardinia**. Scenery extends from cobblestone streets awash with history, to grand buildings in dynamic cities, to lazy forests, hills and fields filled with ancient olive trees, to palms nodding over golden beaches, and secluded coves at every turn.

Ancient ruins, spectacular churches, medieval villages and sacred temples will take your breath away during a cruise through the clear, warm waters of the **East Mediterranean**. A mosaic of islands and nations abounding with enchanting myths and legends, this area has

a magic and mystery that nowhere else can match. The birthplace of Western civilization, Athens and the islands of **Greece** are suffused with extraordinary mythology, whitewashed houses and beautiful beaches. Further west in the **Adriatic Sea**, discover the little-known wonders of **Croatia** and neighbouring **Montenegro**, or the extensive coastline of **Southern Turkey** where east meets west at the gateway to the Orient.

America provides a continent of contrasts - from the mountainous wilderness of the **Pacific Northwest**, the distinctive beauty and stately character of **New England's** coastline, and the long sandy beaches of **Florida**, to the passionate celebration of life that runs throughout **Mexico**, where waves land on **Pacific** and **Caribbean** beaches the length of the country, America's

CRUISE ALONG THE TOWERING CLIFFS AND SPECTACULAR FJORDS OF NORWAY AND ICELAND, THROUGH THE ARCHIPELAGOS AND INLAND WATERWAYS OF DENMARK AND SWEDEN...

coastline attracts seafarers from far afield.

The deep waters surrounding the **Baltic** are regarded as one of the most unspoilt cruising grounds of Europe. Suspended above northern Germany and Poland, their remote location makes them an ideal destination for unique and tranquil charters. Cruise along the towering cliffs and spectacular fjords of **Norway** and **Iceland**, through the archipelagos and inland waterways of **Denmark** and **Sweden** and across the **Baltic Sea** to the fairy tale towns and villages of **Finland**.

Camper & Nicholsons has a fantastic line-up of yachts that will be circling the recommended cruising grounds this winter season and next summer. For further information please contact your nearest Camper & Nicholsons charter broker, see page 10

— Charter a yacht with Camper & Nicholson's and get closer to the action

LES VOILES DE ST TROPEZ

27 September - 5 October

The perfect backdrop for a classic sailing yacht regatta, St Tropez has been hosting Les Voiles de Saint Tropez for 30 years. Originally known as La Nioulargue, the annual rendezvous of beautiful, traditional sailing yachts and prestigious modern sailing yachts is held in the bay of St Tropez each autumn. The event was first created in 1981 when an owner and skipper of two classic yachts raced each other from the foot of the village of St Tropez around the Nioulargo to arrive opposite Club 55 on Pampelonne beach. Today it has become a stunning event for owners to enjoy the power and performance of over 300 sailing yachts in every size, shape and era racing across seven performance classes.

MIPCOM TV FILM & TV CONFERENCE, CANNES

13 - 16 October

Whether to entertain or simply enjoy a peerless environment in which to work, socialise and relax, a megayacht has no comparison. They are the equivalent of



— From art festivals to the noisy grand prix circuits, it is not only the boat shows that attract superyacht spectators. Charter a yacht with Camper & Nicholson's and get closer to the action



six-star, self-contained private resorts complete with business and conference facilities and a variety of entertainment and relaxation amenities. Chartering a yacht at MIPCOM gives you the opportunity to stay on top of industry trends, break hot news and find great stories. Meet the most influential and brightest leaders in TV and film, digital media and advertising/brands and entertain on board throughout the week.

—
SHOWBOATS INTERNATIONAL 'BOYS & GIRLS CLUB' RENDEZVOUS, BAHAMAS

13 - 15 November
 The ShowBoats International 'Boys & Girls Club' Rendezvous is an annual charity event gathering superyacht owners and guests from around the world in the Bahamas. From traditional weekend favourites such as the famed Dine Around the Docks YachtHop, to cocktail parties and a gala dinner, the weekend is a hive of social activities all in the magnificent setting of Paradise Island.

—
ABU DHABI F1 GP

21 - 23 November
 Held in the beautiful surroundings of Yas

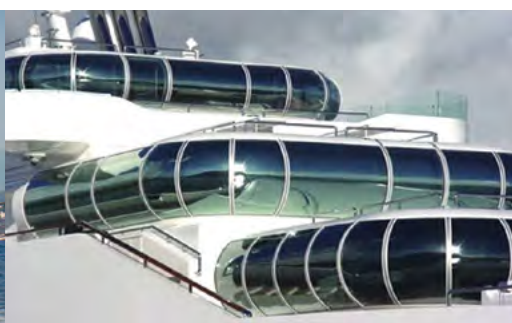
Island, the Yas Marina Circuit has become the home of one of the world's leading Formula 1 events. Take your seat in this beautiful setting and enjoy the unparalleled motorsport event and social events that take place throughout the weekend.

—
ART BASEL, MIAMI

4 - 7 December
 Miami Beach is the setting for one of the most important contemporary art shows in the world, with exhibitions from leading art galleries offering a selection of works from masters of modern and contemporary art as well as the emerging stars of the art world.

—
ASIA SUPERYACHT RENDEZVOUS, THAILAND

16 - 18 December
 Held annually on the shores of Phuket, the Asia Superyacht Rendezvous welcomes superyachts, their owners, VIP guests, captains and crew to an exclusive gathering of both sailing and motor yachts. Highlights of the social programme include a welcome cocktail party, a model boat building contest, a treasure hunt and a gala dinner on the final evening.



A LEGACY BUILT ON ICONIC YACHTS

+49 40 3119 1200
yachtsales@blohmvooss.com
blohmvoossyachts.com



A FUTURE BUILT ON UNCOMPROMISING QUALITY

Blohm+Voss has a proud heritage and one that is truly unique, just like each of the iconic superyachts we've built over the past 137 years. For people who have a unique vision, are unwilling to compromise and demand exceptional build quality, Blohm+Voss is the answer. Our track record of delivering fully custom, highly innovative, top quality superyachts over 80m is simply unparalleled.

On land, as at sea, stability and security are paramount – our outstanding portfolio and strong financial position assures clients that we're a sound and reliable partner. Importantly, we also have the capacity to take on new construction projects with an immediate start and a shorter delivery time.

If you'd like to create your own yachting icon, we invite you to visit our shipyard, meet the team and get started.





A colossal project taking nearly four years to build, Benetti's latest superyacht is nothing short of a masterpiece

—
by **Georgie Ashard**

Illusion I

Specifications

—
Length
 58m (190'3)

—
Beam
 10.6m (34'9)

—
Draft
 3.1m (10'2)

—
Builder
 Benetti

—
Interior designer
 Green & Mingarelli

—
Year
 2014

—
Guests
 12

—
Crew
 13

—
Charter price from
 US\$350,000 per week



Everything about Illusion I oozes elegance; opulent materials, including Lalique glass, exotic woods, coconut weave, mother-of-pearl, onyx and parchment, are ingeniously employed throughout her interior. Full height windows on her main deck flood these rich fabrics with an abundance of natural light, and also promise unspoiled views wherever she roams.

The massive master suite can be found on the main deck, and below a full-width VIP stateroom and four large staterooms with lavish ensuite bathrooms in rich cream stone and onyx. The main deck also has a full bar (one of six on board!) and beach area, allowing maximum privacy for relaxing or entertaining as well as easy access to the water or one of her many water toys. The toy list is incredible and guests can choose from flying on the jetboard to sub-aquatic fun on the seabob or even some

simple swimming with the novel scuba equipment.

In fact everything about Illusion I has been carefully planned for optimum privacy, comfort and fun and all her decks provide guests with a multitude of secluded zones and entertainment. The latest movies will be on offer in the intimate cinema on the bridge deck, sunset cocktails can be served in the huge Jacuzzi and guests can work off all that indulgence with state-of-the-art gym equipment on the sundeck. With such a long list of artfully crafted features, there is no arguing this superyacht is set to become one of the most talked about yachts for charter. She will be available in the Caribbean and Bahamas this coming winter season.

For more information please contact your nearest Camper & Nicholsons' charter broker, see page 10

SEA+I catches up with superyacht chef **Pepijn Mittelmeije** on board the 63.4m (208') Polar Star to discover the secrets of his success

Taste notes

Pepijn Mittelmeije was working on a private island off Ibiza when a colleague told him about the joys of cooking at sea. Noting the obvious benefits, he found a job aboard a luxury motor yacht. Eight years later he is still cooking up a culinary storm on the water, knocking up gastronomic delicacies on one of the most celebrated charter yachts, the Polar Star.

Where does your love of food come from?

Food has always played a major role in my life. Growing up I was surrounded by cooks, my father and uncle both being chefs. I was given my first cookbook when I was just four years old. I started cooking in restaurants at 15 (this was not my intention but I was too young to ride a delivery bike for the local pizza place and so they had me in the kitchen instead). I haven't left the kitchen since.

What are the benefits of cooking



Polar Star

—

Length
63.4m (208')

—

Beam
12.8m (42')

—

Builder
Lurssen

—

Exterior designer
Espen Oeino

—

Year
2005

—

Guests
12

—

Crew
17

—

Summer cruising area
Please enquire

—

Charter price from
€380,000 per week

aboard a yacht?

Cooking on board a superyacht provides me with the opportunity to combine my two passions: travelling and cooking. I have travelled the world extensively, working on cruise ships first, then private islands, before landing a job as a chef on board a superyacht.

Where do you draw your inspiration?

My peers and award-winning chefs. One name that springs to mind is Edwin Soulman. A renowned chef, he is also a good friend and has provided me with much inspiration. He owns the fantastic restaurant One in Roermond, which has a Michelin Star. I also read cookbooks before going to bed, looking for inspiration and ideas.

What is your food philosophy?

Food should always look beautiful. You eat with your eyes first, then your nose. The taste comes after.

Are there any restaurants that you would recommend?

Le Louis XV in Monaco; De Leest in Holland; and almost any Naples pizzeria.

What are your strengths?

I can adapt easily and I know how to cater for many different tastes, diets and allergies. I am also a big planner - I'll write a menu for the week and then adjust it according to preferences or incorporate some great local ingredients, such as freshly caught fish or vegetables from the local market.

Do you use any special ingredients?

I stick with seasonal and local produce as much as possible. I like to incorporate local flavours in all of my dishes and I am always looking for ideas when I am in new locations.

Describe a typical day for you while on charter

My alarm is set for 5.30am and I always start the day with a

peppermint tea and honey. Music keeps me company in the galley and I have different playlists for different times of day to keep me going. I start by making fresh bread followed by the desserts for the day, then guests' breakfast, followed by crew lunch, guests' lunch and dinner for both the guests and crew. If I manage to finish by 11pm it is an early night.

Have you had many strange requests?

One guest let the food in her dreams dictate the menu for the day. This was fun but quite difficult as we would have to wait until she woke up to start preparing.

Where do you see yourself in 10 years?

I want to start my own restaurant in Virginia, serving classic European and Mediterranean cuisine but on another level.

Sum up your style...

Light, well-balanced, Mediterranean-influenced cuisine.



+ On the menu

—

Lunch

—

Start with...
Pan-seared sea bass on a fine Greek salad, with a lemon herb vinaigrette and caramelised black olives topped with shaved fennel

—

Followed by...
Parfait of nougat with a salad of melon and mint, blueberry coulis and a sesame tuille

—

Dinner

—

Start with...
Saffron risotto with mussels, squid and chorizo sausage

—

Followed by...
Double-cut pork chop served with pancetta-wrapped peaches, sweet potato purée, green asparagus and a sage chipotle sauce

—

Finish with...
Coffee-infused crème brûlée with caramel ice-cream and almond cookies

Superyacht **Captain Veli Karacinar** reveals the highlights of his career on board the 26m (85') Sultana and explains what it's really like to manage a team of people at sea, and why a large dose of patience often comes in handy

Word on the bridge

Sultana

—

Length
26m (85')

—

Beam
5.9m (19')

—

Draft
2m (7')

—

Builder
Feadship

—

Year
1969

—

Guests
8

—

Crew
4

—

**Winter + summer
cruising area**
West + East
Mediterranean

—

Prices from
€38,000 per week

Where is your favourite cruising ground?

It has to be the coastline of Turkey. Not only is it my homeland but the water is clear, there is no swell and you can anchor just about anywhere you choose. There is also an abundance of wildlife and marine life, including amazing sea turtles. The locals are also welcoming and fun; I love watching the old boys wander up and down the harbour selling fresh bread, pastries and souvenirs. It's very quaint.

Which ports and harbours do you most look forward to visiting?

I like the sheltered ports of Monaco, St Tropez, Bonifacio, Porto Vecchio, Calvi and Porto Rotondo. San Remo is also great because it is just as busy in the winter as it is in summer and has great cycling routes for the active guests and crew. For something a bit more low key, Gocek is well-protected in the Bay of Fethiye and has some wonderful traditional and modern restaurants.

Where are your favourite onshore hangouts?

Ephesus in Turkey; Rhodes old town and its castle; Bodrum's Halikarnas nightclub and castle; and Liman Koftecisi - a fantastic Turkish restaurant in Bodrum.

Where is the one place you'd like to cruise that you haven't already?

The Caribbean. I'd love to experience its warm, blue waters. After that, I know I'd retire happy (I'm only 28 so I have a while to go).

Where is your favourite destination?

Without doubt it has to be the stunning cruising grounds of the Maldives.

What is the most stressful part of your job?

Time management, not just for myself but for everyone. It's difficult when you have to rely on others and have to be somewhere or have something completed on time.

Do you have any advice for an aspiring skipper?

Be on time and be honest - it sounds simple but you'd be surprised.

What would be your ideal yacht?

Sultana of course - but with a mast.

What do you enjoy most about being captain of Sultana?

I love the solitude of night cruising. It's so peaceful when it's just the open ocean, the stars and not a soul in sight.

For more information on chartering Sultana, contact your nearest Camper & Nicholsons International charter broker, see page 10.



Veli Karacinar

—
Place of birth
Izmir, Turkey

—
Current yacht
Sultana

—
Number of crew
4

Born in Izmir, on the coast of Turkey, Veli Karacinar was practically born on the water. Developing a strong interest in anything to do with the ocean from a very early age, his quick ascent to captaining luxury yachts began with a job in watersports. Today Veli gets to cruise the Mediterranean as captain of the 26m (85') motor yacht Sultana.





Where in the world

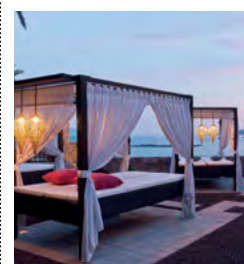
News and updates on luxury travel



CÔTE D'AZUR CHIC

The newly renovated sister properties Tiara Yachts and Tiara Miramar opened this summer with a brand-new look and feel. Located along the Côte d'Azur, the properties are tucked into a rocky mountainside in a quiet sheltered bay just a short walk from the charming Provençal village of Théoule-sur-Mer. With Cannes just 10 miles away, the two hotels are the perfect base from which to explore the region, or to simply escape the bustle of 21st-century life and indulge in the pools and restaurants, beach terrace and its bar, and the spa.

www.tiara-hotels.com



PARISIAN PARADE

Following an extensive four-year restoration and marking the debut of The Peninsula Hotels into Europe, The Peninsula Paris welcomed its first guests in August. Located on Avenue Kléber in the 16th arrondissement, a few minutes' walk from the Arc de Triomphe, the property occupies a building that served as the Majestic Hotel in the early 1900s. Some 3,000 workers and craftsmen spent four years renovating many original features, including the sculpted stone façade, neoclassical panelling, murals and more, restoring the historic building to its former glory. The contemporary hotel boasts state-of-the-art facilities throughout its 200 rooms and suites, six restaurants and bars, expansive terraces - including one on the rooftop with a 360° view of Paris - luxury boutiques, the Peninsula Spa and private reception rooms. The Peninsula Paris joins a number of leading hotel brands in the city, including the Plaza Athénée, which re-opened in August, the Shangri-La, Le Bristol, Raffles, and the Mandarin Oriental. Next year sees the re-opening of two iconic legends, the Crillon and Ritz, each of which are in the final stages of major refurbishments.

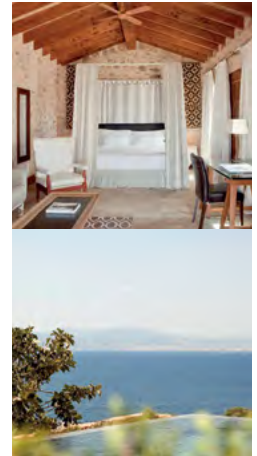
www.paris.peninsula.com





MALLORCAN MARVEL

Villa Roca Mar is the latest addition to Haute Montagne's portfolio of villas. Set on a cliff edge overlooking the crystal clear waters of the Bay of Palma, Mallorca, Villa Roca Mar boasts spectacular views, design and architecture. Located just ten minutes from the capital city of Palma in the exclusive residence of Bendinat, Villa Roca Mar is a six-bedroom haven of barefoot luxury. The villa spans over four floors and features an outdoor swimming pool, an open-plan living and dining area, private roof terrace with bar, outdoor kitchen, hot tub, and a beach club area with sun loungers and day beds. www.hautemontagne.com



TOM'S DINER

Located just moments away from Tower Bridge and the Tower of London, Tom's Kitchen opened at the end of the summer in St Katharine Docks. Set in Commodity Quay, the restaurant overlooks Central London's only marina. True to the Tom's Kitchen ethos, dishes are created using the very best locally sourced ingredients. Design features include exposed ceilings and loose seating along a glass façade that opens up to a unique waterfront area with a floating pontoon on the marina opening later this year. www.tomskitchen.co.uk



ULTIMATE COUNTRY PAD

Dormy House is an idyllic country retreat within easy driving distance of London. With a focus on indulgence and relaxation, the recently re-imagined 17th-century Cotswold farmhouse opened the House Spa earlier this year. The spa's bespoke facilities include a 16-metre infinity pool and 'Bubble Bath' hydro pool, thermal suite, salt infusion steam room, lavender sauna, Rasul therapy suite, Champagne nail parlour, and all manner of treatments. The House Spa is a welcome addition to the fresh and playfully designed accommodation, two restaurants (fine dining at The Garden Room and pub fare at The Potting Shed), and its recently opened sister venue Foxhill Manor. www.dormyhouse.co.uk

MEDITERRANEAN HIDEAWAY

This summer the Mallorcan Cap Rocat unveiled the Suite del Mar just steps from the hotel's private beach. Tucked away in its own herb garden, with a private infinity pool and two secluded terraces, the exquisite suite boasts breathtaking views over the Bay of Palma. The interior décor marries exposed brick walls and high ceilings, and is dressed with local fabrics and vintage black and white photos of the island. Outside, there are two shaded terraces for al fresco dining and lounging, a small infinity pool, surrounded by apple, fig and olive trees, rosemary and bougainvillea. A short stroll from the new suite, the main swimming pool, which has been built into the ramparts of the converted military fortress, is also a serene spot to soak up the rays and relax while looking out over the yachts racing in the busy bay. www.caprocat.com



TASTE THE MED

Two-Michelin starred chef Antonio Mellino brings the fresh flavours of Campania in Southern Italy to the heart of London's Mayfair with the opening of Quattro Passi. Complete with private members club, this is the first restaurant for Antonio Mellino outside of Italy. Mellino has earned two Michelin stars and an international following at his landmark restaurant Quattro Passi Nerano, which opened in 1999. The seasonally inspired menu is defined by the quality of the freshest Mediterranean ingredients, a lot of which they produce themselves in Italy and ship daily to the England. www.quatropassi.co.uk



GREEK IDYLL

The refurbished Santa Marina Resort in Mykonos opened its doors to guests earlier this year. Sporting new aesthetics with 75 guest rooms and suites, including villas with pools, the new-look Santa Marina has a timeless island feel. Located on the secluded peninsula of Ornos Bay overlooking the Aegean, guests have access to the 150-metre private beach, and can catch the speedboat shuttle to Mykonos Town. www.santa-marina.gr



BUSY FOUR-SEASONS

It's been a busy year for Four Seasons Hotels and Resorts and it looks like this will continue until the end of the year with the opening of a number of new resorts. Most recently, the brand opened The Four Seasons Resort Orlando at Walt Disney World Resort. Located within the residential community of Golden Oak just minutes from all the parks attractions via Four Seasons transportation. The resort's rooms are the largest in Orlando, and for the first time, Four Seasons has a nine-bedroom option with a top-floor Royal Suite.

Other attractions include Explorer Island, where guests can enjoy outdoor movie nights, pools, a water park, kids' zone, and spa. October will see the opening of the Four Seasons Hotel Moscow on Menezhnaya Square, adjacent to the gates of Red Square. Boasting magnificent views of the Kremlin, the 180-room hotel is just a short walk from St Basil's Cathedral, the Kremlin and the Bolshoi Theatre. A further two Four Seasons properties will open in December in Dubai and Johannesburg. Watch out for news on the openings in the next issue of SEA+I. www.fourseasons.com

THE BRANDO

The Brando is an eco-luxury resort on the French Polynesian island of Tetiaroa. Used by the actor Marlon Brando himself as his personal retreat for over three decades, The Brando opened to the public earlier this year and pays homage to Brando's legacy of responsible luxury - preserving the natural environment and the Polynesian culture of the islands. Each of The Brando's 35 expansive one-, two-, or three-bedroom villas sit on a private beach, either facing the wide ocean or South Mermaid Bay. Only accessible by private airfield, The Brando also has two



restaurants and a Polynesian Spa. As well as participating in typical beach activities and enjoying the island's many bike and walking paths, each day guests are invited to attend an activity or excursion to inspect plants, marine life, and birds, or participate in traditional Polynesian pastimes. The island has a coconut palm forest, a seahorse pond, a preserved rainforest, a bird sanctuary, lemon shark nurseries, an abandoned coconut plantation and sea turtle nests, while from the shore guests can spot whales and dolphins just beyond the atoll's thriving coral reef.

www.thebrando.com



HILLSIDE HAVEN

Set in a stunning hillside location backing onto virgin rainforest in the heart of Havelock Island, Jalarka is the first boutique hotel to open in the Andaman Islands. Comprising just seven rooms and suites, Jalarka also has a 16-metre infinity pool with panoramic views. The Andaman Islands are ideal for a multitude of land and water activities including diving, snorkelling and salt water fly-fishing, while their beaches are picture-postcard hideaways.

www.ampersandtravel.com

Above; idyllic beaches of the Andaman Islands

CHRISTOPHE HARBOUR

The stunning development at Christophe Harbour has been causing a stir over the past few months. The new superyacht marina is taking shape, and work is underway on the Park Hyatt hotel and the 18-hole Tom Fazio championship golf course. The Pavilion Beach Club is already welcoming guests to lounge beside the pool or dine in the Pavilion, and in June the development welcomed the new waterside beach bar SALT Plage. Overlooking Whitehouse Bay, SALT Plage is housed on the site of the old salt warehouse and takes full advantage of the seaside setting.

www.christopheharbour.com

The Bahamas is all about ocean-front living. Scoop up these spectacular beach-front properties in enviable locations

Abode



Cascarilla

Paradise Island

This superb residence is a fine example of individuality in architectural design. Expansive one-acre grounds feature a Spanish-style courtyard, inviting terrace with open and covered lounge and dining areas overlooking a



75-foot-long lap pool, 18-hole golf course, and ocean beyond. The interior comprises a chef-inspired kitchen, breakfast area, living and dining rooms with sea views, and five en suite bedrooms, four of which offer incredible ocean views. Soaring cathedral ceilings, limestone and coral stone flooring, and a

restful neutral palette run throughout the interior. As part of the prestigious Ocean Club Estates, residents enjoy access to a private beach, tennis, golf, spa and watersports facilities, plus all the amenities of the One & Only Resort. The property is for sale at US\$4,650,000 www.christiesrealestate.com



Albany Nassau

Perched along the ocean, Albany's beachfront properties offer views over the marina as well as the beach and ocean.

The exclusive resort community on the southwestern end of New Providence sits on 600 oceanfront acres. The developers have a few remaining beachfront villas available, all of which are courtyard-style homes with private pools and gardens. Inspired by traditional Bahamian architecture, Albany's villa designs are flexible and can be adapted to cater to the tastes and lifestyle of their owners.

The surrounding resort's amenities include a megayacht marina, Ernie Els-designed championship golf course, cinema, fitness centre, tennis courts, spa and salon, multiple pools and bars, family water park, kids clubhouse and an array of restaurants and bars.

Residences start at US\$5,000,000
www.albanybahamas.com



There is no need to shy away from colour this season. Mix **Miami pastels** and **Fijian prints** with modern accessories for a dress-down approach to your next cruise

A splash of colour

01

Take shade in **Christys Hats** petrol blue Yorkie Snap Brim Panama. christys-hats.com

02

Stand out from the crowd in **Frangipani's Amazon Drift** shirt. frangipani-style.com

03

Camouflage in **Vilebrequin's** turtle swim shorts. vilebrequin.com

04

Drive fish wild in **Love Brand's Fish Frenzy** swimming trunks. lovebrand.com

05

Jump on board **Frescobol Carioca's** Surf Board. frescobolcarioca.com

06

Travel in style with **Steamline's** elegant vintage style cases with a modern day twist. steamlineluggage.com

07

Watch the sunset protected by **Sunday Somewhere's Matahari** blue glasses. sundaysomewhere.com

08

Solve all those packing problems with **Lock & Co's** folding Panama. lockhatters.co.uk

by Tamsin Vaughan

01



02



03



04



06



07



08



05



Cobalt-blue bikinis and sky blue kaftans are making waves beachside. Bring a touch of the Hamptons into your yachting wardrobe this season

Feeling blue



01

For a subtle hint of blue, **Varley's Bando** bikini oozes calm sophistication. varley.com

02

Cover up with a classic **Camilla** kaftan. camilla.com.au

03

Beulah London's lightweight cashmere and silk satin scarves will take you from day to night. beulahlondon.com

04

Shade your eyes from the sun in a stylish Panama from **Christy's Hats**. christys-hats.com

05

Stay cool and stylish in the **Sally Fan Blue** cover up from **Melissa Odabash**. odabash.com

06

Step on board in style with a classic case from **Steamline's Entrepreneur** collection. steamlineuggage.com

07

Carry it all ashore in style with **Austique's** geometric-styled bag. austique.co.uk

08

Have fun at the beach with **Frescobol Carioca's Bat & Ball**. frescobolcarioca.com

—
by **Tamsin Vaughan**



The original

The golden age of travel may have been in the Roaring Twenties, but the art of journeying in style is still alive and well today when travelling on board the Venice Simplon Orient Express train. Savour the beautiful surroundings - the opulent interiors, sparkling crystal, plush fabrics, and polished woods. Relax in your own cabin as you look out over exciting new panoramas, and enter a world of romance as you relax into a more sophisticated age and a gentler pace of life. www.belmond.com

Time travel

A leisurely trip on a train or a superyacht that evokes the romance of travel's golden age - SEA+I goes in search of old-world journeys with a 21st-century twist

by Miriam Cain



The icon

The legendary yacht of Aristotle Onassis, Christina O has regularly entertained the world's most famous, powerful and influential people, including Sir Winston Churchill, Marilyn Monroe, Frank Sinatra, and many more. Now totally refurbished with five-star guest facilities, she still retains a fantastic sense of comfort and opulence. With her huge deck spaces, original mosaic-tiled swimming pool and famous bar, Christina O delivers a truly unique opportunity to cruise in style and comfort. www.camperandnicholsons.com

The explorer

Those with an adventurous streak might like to board the 65m (214) Lamima to explore the waters of Indonesia. Combining the charm of a traditional Indonesian two-masted phinisi with the opulent luxuries of modern yacht design, Lamima has plenty to offer those looking for a bit of adventure. She is a PADI-diving centre and also has an instructor on board, along with an expert tour guide amongst her nineteen crew. Twelve guests can go in search of Komodo dragons, or simply do nothing but soak up the peace of the open sea. www.camperandnicholsons.com

The glamorous

A much-celebrated nineteenth-century villa at the rocky tip of the Cap d'Antibes, the Hôtel du Cap-Eden-Roc emerged from a four-year, €45-million restoration in 2012 and is today one of the world's most legendary and luxurious hotels. It has retained its elegant, 19th-century ambience, and its rooms are now as grand as when the hotel first opened in 1870. Facilities include 22-acres of forested grounds, a seafront pavilion, two private villas, a heated saltwater pool, and a pier for guests, who can arrive by tender to dine at the exquisite Restaurant Eden-Roc. www.hotel-du-cap-eden-roc.com

Opposite Journey in style aboard the Venice Simplon Orient Express
Above, clockwise from top left The 99m (325') Christina O; the traditionally styled Lamima; the Hôtel du Cap-Eden-Roc; Hotel Splendido

The classic

Perched on Italy's northwest coast, Portofino is one of the most photogenic fishing ports in the Mediterranean. Home to the exclusive Hotel Splendido, it has been a magnet for Europe's beau monde for decades. One of the essential stops on the world luxury circuit, the original Hotel Splendido is a peaches-and-cream villa on a hillside above the port. It has a glorious terrace, swimming pool, gym, sauna, tennis courts and extensive gardens. www.belmond.com

LOS ANGELES

—
by Miriam Cain



LA is a strange city, as vast as it is complex. It is not the sort of place where you can happily walk the streets and get to know the locals, but if you know where to go it can be a very cool experience. Combine the sparkling city's best-kept secrets with well-known tourist trails for the ultimate long weekend.

Pillow talk

In LA you will find hotels that focus on ambience and indulgence, and those that simply ooze Rat Pack swagger.

Chateau Marmont



For something celebrated, glamorous and star-studded, Chateau Marmont in West Hollywood is a truly Californian haunt. 1920's apartment style rooms and two modernist bungalows sit on the hillside amid tropical gardens. It is here that you will find the Hollywood set relaxing with after dinner drinks - the star to civilian ratio is approximately 1:1.

Hotel Bel Air, Beverly Hills Hotel + Sunset Tower Hotel

—
Tucked away in the city's Spanish stucco area are the landmark properties



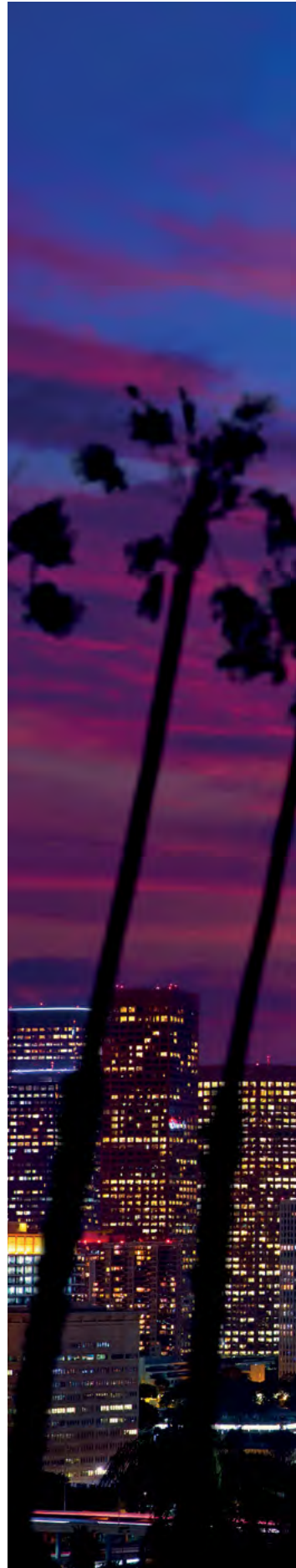
of the Dorchester Collection's Hotel Bel Air (recently the subject of a Hollywood boycott) and the Beverly Hills Hotel, both of which have become iconic destinations. The Sunset Tower Hotel is also nearby. Housed in a revived 1920s Art Deco Landmark that was once an apartment building to the stars (John Wayne, Marilyn Monroe and Frank Sinatra all had crash pads here), its décor pays tribute to the Deco era, and the rooms hark back to a distinctly more elegant period.

The Standard

—
For those looking for the hippest digs in the city, André Balazs Standard is trendy and whimsical, with a canary-yellow restaurant and shocking-pink lobby (the rooms are chic and minimalist in their design). The Rooftop Bar, with its stunning downtown views, potent mojitos, and movies projected onto a nearby building façade, attracts the young, the beautiful, and the soon-to-be-famous.

L'Ermitage Beverly Hills

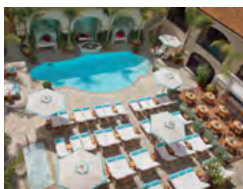
—
Minutes from iconic Rodeo Drive, l'Ermitage Beverly Hills is a favourite with visiting fashionistas. A streamlined, uncluttered aesthetic





prevails in the spacious rooms. The rooftop pool, with its teak chaises and panoramic views over the Hollywood Hills, is a scene unto itself.

Beverly Wilshire



The luxurious and understated Beverly Wilshire is also just a few steps from Rodeo Drive. All of the rooms and suites are decorated in pale, creamy fabrics, with the Four Seasons' usual mix of antique repros and modern amenities. Many have balconies and equally impressive views of the Hollywood Hills.

Viceroy Santa Monica

Across town in Santa Monica, the Viceroy Santa Monica is a chic interpretation of Californian style, with a sensational shaded pool and sea-view rooms.

Shutters-on-the-Beach

Shutters-on-the-Beach in Santa Monica is beautiful, cosy and not too modern. With a great view of the ocean, you know you are in California when you wake up.



At a glance

— **Best travel time** LA is temperate all year round, but December to February sees rainy periods, and August to September can bring heat waves
Currency US Dollar
Language English
Vibe Casual cool

Eat, drink + dance

Gourmets will find epicurean satisfaction all over LA, as celebrity chefs and home-grown talents conjure up an impressive cross-pollination of culinary influences. The dining scene is known for championing farm-to-table dining and for prioritising healthy living.

Breakfast + brunch...

— **Hal's Bar & Grill** on Abbot Kinney Boulevard in Venice serves up fantastic eggs Benedict for breakfast. For a lavish Sunday brunch, head to **Hotel Bel Air** or the



Four Seasons (above). Down in Santa Monica, **Huckleberry Bakery & Café** (below) is fantastic for a leisurely breakfast any day of the week, as is **Fig** at the Fairmont Miramar. The grounds of the hotel are a picturesque setting for the bistro-inspired



restaurant and the breakfasts are so good that even locals travel from across town to taste the fresh ingredients from nearby Santa Monica farmers' market.

Lunch...

— Popular lunchtime haunts include **The Ivy**, which is also a great place to spot celebs, while **Ammo** in Hollywood and **Bouchon** in Beverly Hills are a little more laid back. Lunch at **Reddi Chick** followed by ice-cream at **Sweet Rose Creamery** is an LA ritual. With a focus on sustainable food, **Forage** uses ingredients sourced



from its neighbours and surrounding farms and ranches. Their pick-and-mix chalkboard specials combined with colourful salads are perfect for a long, laid-back and languorous lunch.

Dinner...

—
Providence (near Paramount Studios) offers the freshest seafood served with French flair. **Ristorante di Giorgio Baldi** is the place to head for simple dishes made with high-quality ingredients. For a special occasion, **Cast** at the Viceroy Santa Monica is the culinary genius of

Chef Tony DiSalvo. For comfort food in elaborate surroundings, **The Spotted Pig** brings an ingenious range of bar snacks and hearty pub food to the menu at Chateau Marmont, and over at Sunset Tower the chic **Terrace** restaurant serves a selection of classic comfort food, including that most Californian of dishes, the Lobster Cobb salad. Meanwhile **Helming Pica**, chef Ricardo Zarate blends native Peruvian dishes in a Japanese style, and for a more worldly, indulgent atmosphere and food, go to Wolfgang Puck's **Spago** or **CUT** (the latter is housed in the Beverly Hills Hotel). And last but not least, José Andrés' **The Bazaar** (below) is fabulous.



Do + discover

The idea that LA isn't cultured is untrue; the culture just comes in a contemporary package. Its real strengths are contemporary art and architecture. The city's art scene is energetic. **The Museum of Contemporary Art (MOCA)** is very current with a good vibe and great



exhibitions, as is the mid-city **Los Angeles County Museum of Art (LACMA)** (pictured bottom). The **Getty Center** is worth a visit for its view alone, but the artwork is equally impressive. For works by local artists, head to the **Hammer Museum** in Westwood or **Bergamot Station**, housed in an old railway station, where you will find a variety of contemporary art galleries worth a browse.

LA does a lot of yoga - from **Maha Yoga** in Brentwood, accompanied by rock music, to **Yoga Works**, which has branches throughout the city - there is something for every yogi. Santa Monica steps are great for running, and for hiking **Runyon Canyon Park** and the **Santa Monica Mountains** both provide a great escape for a long walk, the latter with rewarding views over the sprawling metropolis. Closer to the ocean, the **Will Rogers State Historic Park** off Sunset Boulevard is a welcoming haven.

Those visiting LA for the first time should take to the tourist trail and head up to the viewpoint on **Mulholland Drive**. Hundreds of metres below, the metropolis shines all the way downtown to the skyscrapers. Drive

through **Beverly Hills** and the mix of Spanish villas, Arabian palaces, Gothic towers and mid-century bungalows - many of which belong to celebrities. Real Angelinos live in Santa Monica, home of old-fashioned apartment blocks with views over a seemingly never-ending strip of sand lined with lofty palms. From **Santa Monica Pier** walk, rollerblade or cycle along the boardwalk for a true taste of what it's all about.

No trip to LA would be complete without a visit to one of the great studios. Mostly they are all just huge, generic, windowless warehouses that act as soundstages, but each lot has a block of cool façades. **Warner Brothers** has the Gilmore Girls' sweet, fake perfect town and, **Universal Studios** still has its Old West set.

See + shop

LA provides great shopping and every designer label worth their salt can be found in Beverly Hills, where the shopping scene revolves around the infamous **Rodeo Drive**. For something different, **Melrose Avenue** is a funkier place to shop with cool fashions, and **Robertson Boulevard** is where you will find boutiques such as **Kitson** and **Madison**. Those looking for something other than fashion should head to **The Farmer's Market** where you will find fresh produce and some colourful characters.



Sumptuous settings, bespoke touches, exceptional cuisine and personal service - the impressive 63.4m (208') **Polar Star** is the ideal yacht on which to explore curious corners of the globe

Star of the sea



On the scene

—
Arrive in style and settle in for an extraordinary voyage of a lifetime. With more than four decks at your disposal the Jacuzzi, sunning areas, bar, open-air cinema and array of water toys on offer, you really can go overboard.



Watch the world go by

Generous outdoor spaces play host to multiple relaxation, sun lounging and alfresco dining areas. Sit back and relax in the large Jacuzzi, enjoy a cool drink from the bar and watch the world go by from the ultimate viewing platform.





Made in the shade

—
Kick back and enjoy barefoot glamour surrounded by luxury comforts aboard. Sumptuous accommodation is arranged across six cabins, including a panoramic master suite with private study on the upper deck.







Fun at sea

—
Soak up the lifestyle and simply have fun with companions or with the array of water toys available.





Sitting comfortably

—
Find your perfect spot and enjoy the last rays of the sun, before the evening adventures begin - aboard or ashore - the choice is yours.









Backstage



For good measure

— Made-to-measure tailoring has become one of the most exciting areas of menswear. Renowned for its personal made-to-measure service, Florentine maison Stefano Ricci purveys luxury and elegance, bringing cutting edge fashion and style to complement traditional tailoring skills. Clients can buy suits off the peg, follow an existing pattern with a fabric of their choice, or have a suit completely custom-made. Celebrating 42 years of luxury lifestyle for men, the company began making ties and shirts in the 1970s and later introduced a complete men's line. More recently, Stefano Ricci has expanded its line into furniture, porcelain, silverware and the interiors of superyachts.

We would like to extend our thanks and appreciation to the Owner of Polar Star and her patient and enthusiastic crew for facilitating the on-location photo shoot published in this issue of SEA+I. Camper & Nicholson's represents Polar Star as Central Agents for both sale and charter. Please contact your preferred Camper & Nicholson's office for more information on the spectacular vessel. With thanks also to Stefano Ricci and their bespoke tailoring service for the clothes worn by Romeo, and Burberry, Varley and Heidi Klein for the ladies' pieces.

Photography

Jérôme Kélagopian,
Abracadabra Studio

Art direction

Frédéric Holtermann

Logistics

Elodie Arnaud

Stylist

Andrea Lombardo

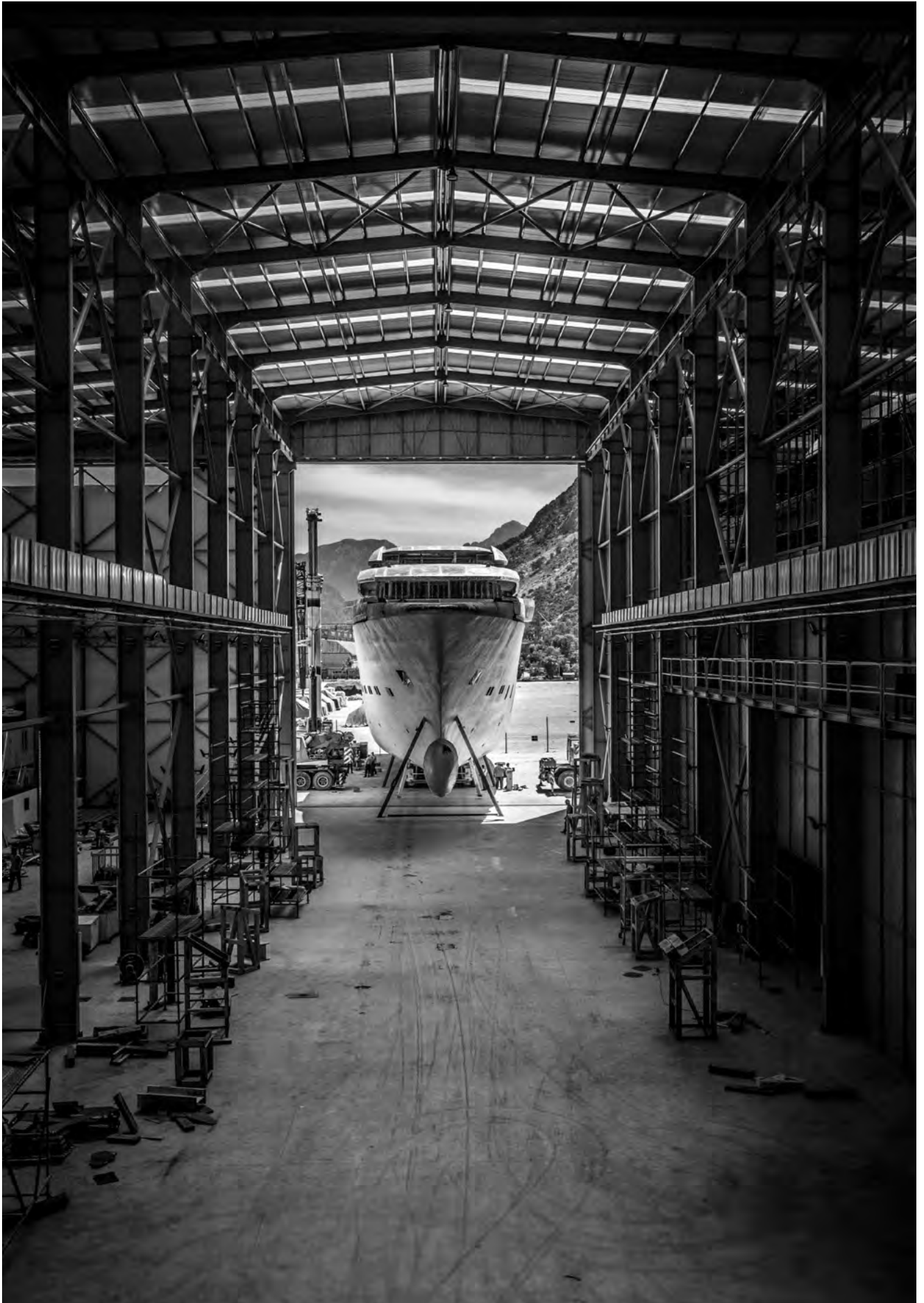
for Stefano Ricci

Hair + make up

Jessica Grandoni

Models

Tiphaine Schirier +
Romeo Nazzari



Behind the scenes...

Part I

Every superyacht that launches represents hundreds, if not thousands, of jobs. A study by The Superyacht Group's *Superyacht Intelligence Agency* showed that the superyacht industry directly sustains 260,000 jobs a year across all industry sectors.

With 5,275 yachts afloat and in build, that equates to each yacht supporting an average of 50 jobs a year, and this number grows with every new launch. In a new series of articles SEA+I takes a look at the jobs behind the superyachts

—
by **Ellie Brade**



In July 2014 the *New York Times* published an interview with Dennis Jones, owner of a new 50m Christensen yacht, who spoke candidly about the number of jobs the US\$34 million order of his yacht had secured over its three-year build. Jones was open about the fact that he believed that his commissioning of the yacht had saved the shipyard, which at the time of his order was struggling due to lack of work. 'The company is up and running better because of us,' he said.

Here, in a rare but welcome move, was an owner willing to publicly speak up for the fact that buying a superyacht keeps huge numbers of people employed. All too often yachting is portrayed as being about one rich person luxuriating on their yacht, forgotten are the hundreds of thousands of people that the superyacht industry directly employs each year.

Joe Foggia, CEO of Christensen wholeheartedly concurred on the impact that yachts have. 'Ninety-plus per cent of the contract price of the yacht goes into payroll, healthcare, American-made materials, goods, services, local and federal taxes; one boat affects close to 1,000 households nationwide,' he said. If you multiply the significant economic and human impact of that one 50m yacht by 360 times for every yacht that is currently in build, it is clear that the significance of the new-build sector alone is huge. And all this is before the jobs that support the existing fleet of 4,915 yachts are counted.

In a sea of mainstream media reports that focus only on the lifestyle and price tags of superyachts, the interview with Jones made a refreshing change. The article resonated with those working in the superyacht industry and, crucially, made an effort to educate those outside it in the true employment value of every yacht. These days, where demand no longer outweighs supply, getting this message more widely understood is an ongoing goal for the industry and is key to building and maintaining an environment in which owners feel comfortable buying and using superyachts.

Misconceptions abound about the worth of the industry, and it has long been a struggle to convey to those outside the superyacht industry just how many jobs the industry supports. One of the steps to address this included a 2012 study by The Superyacht Group's *Superyacht Intelligence Agency*, which was the first to directly survey the superyacht industry and ascertain its annual economic impact.

ANNUALLY THE SUPERYACHT INDUSTRY DIRECTLY EMPLOYS 260,000 ACROSS MORE THAN 6,000 COMPANIES WITH COMBINED JOBS WORTH €4.37 BILLION PER YEAR. THIS REPRESENTS 130,000 LAND-BASED JOBS, 100,000 CONTRACTOR JOBS AND 30,000 CREW ALL EMPLOYED BY THE FLEET OF SUPERYACHTS

Above & left

—
The new-build sector employs a number of highly skilled craftsmen, including joiners and welders.

EVERY YACHT WILL EMPLOY A HUGE TEAM OF PEOPLE EVEN BEFORE WORK HAS BEGUN ON THE ACTUAL BUILD. CONSULTANTS, LAWYERS, INSURERS AND OWNERS REPS, DESIGNERS, BROKERS, THE SHIPYARD TEAM AND A HUGE SUPPLY CHAIN ARE JUST SOME OF THE KEY ROLES REQUIRED FOR A NEW BUILD PROJECT

The report showed that annually the superyacht industry directly employs 260,000 across more than 6,000 companies with combined jobs worth €4.37 billion per year. This represents 130,000 land-based jobs, 100,000 contractor jobs and 30,000 crew all employed by the fleet of superyachts. Breaking down job distribution by business type, suppliers and manufacturers make up the biggest percentage, at 42.3 per cent of worldwide business, followed by shipyards (new build and refit) at 27.5 per cent and marinas and ports at 19.8 per cent. The United States supports the most jobs, with 21.9 per cent of superyacht jobs coming from the country, followed by the Netherlands at 7.8 per cent and France at 6.7 per cent. On top of all these figures, there is also the wider impact of non-marine spend by cruising yachts, such as on tourism activities, which directly benefits the port and country being visited.

These figures are black and white evidence that while yachts are hugely expensive visible assets that by their nature draw attention, they are also huge job-engines and owners deserve thanks more than condemnation for choosing to buy. Unlike many high-ticket items, a superyacht requires constant investment and expenditure from the moment work on it begins and thus has long-term benefits.

The cost of building a yacht, and the jobs this process supports, is just the beginning of the huge number of jobs a yacht will support over its lifetime. Once launched yachts will then support a permanent crew, yacht managers, charter and sales brokers, suppliers, provisioners, agents, refit yards and more. As numbers of superyachts increase, so too does the demand on the support sector of the superyacht industry. They will require berths, fuel, tenders, food, uniforms, paint, power and more. The list goes on and on. From the young apprentices to the managing directors, and all those in between, including this writer, every single yacht commissioned keeps superyacht jobs secure.

NEW BUILD

In the first part of this series of articles for SEA+I we take a closer look at the jobs behind the yachts, starting with an overview of the all-important new-build sector.

For many countries, including Italy, the Netherlands, Germany, and Turkey, the new-build sector represents their biggest distribution of superyacht jobs. As one of the main public faces of the industry, the new build sector is highly scrutinised and order books are closely monitored as a sign of the health of the industry. As is well-known, orders equal jobs and when new-order numbers drop, jobs are lost and skilled craftsmen and women are lost to the superyacht industry. This was starkly highlighted in early 2014 when the New Zealand-based shipyard Fitzroy Yachts closed its doors permanently,

after failing to sign any new orders, leaving 120 skilled superyacht workers unemployed. While many shipyards have struggled to secure orders in recent years, either downsizing or diversifying into other sectors in order to stay open, it is rare to see shipyards shut down entirely. The closure of Fitzroy really drove home the human side of yachting, with so many people out of work when just one new-build order could have kept them at work for at least another couple of years.

On its commission, and indeed prior to its commission, every yacht will employ a huge team of people even before work has begun on the actual build. Consultants, lawyers, insurers and owners reps, designers, brokers, the shipyard team and a huge supply chain are just some of the key roles required for a new build project. When choosing to build many owners will choose to work with a broker to negotiate the path to building, making introductions and ensuring the best fit between owner, yard and design team.

Choosing a yard and designer is one of the most crucial stages of the process and once a detailed client brief is set, yards and designers are invited to pitch for a project. Often a design will be commissioned before the final decision to build, or indeed where exactly to build, has been made. Even at this stage of a build, significant jobs, such as that of the design team, are being supported, and once the formal decision to build has been made, requirements such as gaining finance and undertaking the legalities of a build are yet another employment arm.

After work on a yacht begins, this calls on a hugely skilled team at the shipyard of choice. Probably the biggest point to note about the new-build sector, and so too in the refit sector, is the number of highly skilled craftsmen it employs. A huge list of jobs, such as joiners, welders, project managers, engineers, electricians and painters are called upon, and their skills are what makes the industry and its end product unique. Unsurprisingly their skills are not so highly sought after outside of the industry.

Building superyachts represents the pinnacle of craftsmanship, where form, function and engineering come together in a manner unprecedented by any other industry. Craftsmen and women are trained on the job, learning generational skills, and almost every main shipyard trains up apprentices to ensure that these skills are passed on. Away from the shipyard, an equally skilled supply chain will be hard at work building the components that go into making up the yacht.

By the time the average yacht hits the water, anywhere between 300,000 to 400,000 man-hours of work, often far more depending on size or the level of customisation, will have already taken place. Ahead lies hundreds of thousands more hours in crew employment alone.

In the next 'Behind the scenes' feature SEA+I looks at the jobs supported by the superyacht fleet.

Opposite

—
Every yacht build employs a huge team of people even before work has begun on the actual build.





Super natural

For those looking for true escapism and adventure, **New Zealand** offers something for everyone. Whether it's spotting Kiwi on Kapiti or standing on an active volcano on White Island, a charter along the coastlines of its North and South Islands combines a little bit of luxury with dramatic encounters

—
by **Miriam Cain**



Year-round sunshine, extensive coastlines, diverse natural landscapes, and untouched native forests make New Zealand the perfect outdoor adventure destination. From the subtropical Bay of Islands in the far north to the 16-kilometre long fjord of Milford Sound, scenery of otherworldly beauty is everywhere around you, wherever you cruise. Whether your itinerary takes in the marine reserves and islands lying off North Island, or heads to South Island to glide along the Marlborough Sounds, the best of New Zealand is all about taking to the water.

Known as the 'City of Sails', Auckland boasts more boats per capita than any other metropolis in the world. The country's main international gateway, it is also a great place to use as a jump-off point to explore North Island. Set between two harbours, Manukau to the south and Waitemata to the north, cruise from the harbour to the trendy island of Waiheke lying just off the main coastline, or anchor off the Coromandel Peninsula and discover secluded beaches surrounded by native bush.

The majority of New Zealand's land area is south of Auckland, but the northern parts should not be missed. The landscape is dotted with subtropical forests, beaches, Maori settlements and historic towns. Nearing the tip of the mainland lies the famous 'Bay of Islands', an idyllic spot for watersports and big-game fishing, and also the birthplace of modern New Zealand. It was here that Queen Victoria's government and the indigenous Maori chiefs signed the document ceding the islands to the British Empire in 1840.

After your stay in the Bay of Islands, you can disembark and fly to South Island for a week of adrenalin-packed adventures. Alternatively, cruise south to Auckland and on to the clear, clean waters, fjords and coves along the Marlborough Sounds coastline.

New Zealand's South Island is larger than the North Island but far less populated. It's not for nothing that *The Lord of the Rings* trilogy was filmed here; the scenery alone is worth travelling to see. The varied landscape offers mountains, waterfalls, fjords, lakes, and sun-drenched vineyards. Spend a few days exploring the Marlborough Sounds at the top of South Island: one of New Zealand's premier cruising grounds, it alone offers more than 1,000 miles of coastline to explore. Those looking to explore further south will find some of the most spectacular cruising grounds in the world around the fjords of Milford Sound.



A CHARTER ALONG THE COASTLINES OF ITS NORTH AND SOUTH ISLANDS COMBINES A LITTLE BIT OF LUXURY WITH DRAMATIC ENCOUNTERS.



RECOMMENDED ITINERARY

North Island's Hauraki Gulf and the Bay of Islands

Day 01

Auckland

Perched between Waitemata and Manukau harbours, Auckland offers a buzzing mix of culture, events, nightlife and restaurants with native rainforest, wild beaches and wineries all within half an hour of the city centre.

In keeping with the title 'City of Sails', take to the water and race in an America's Cup yacht or make your way across the harbour on 'SeaLegs' - a New Zealand invention that travels over dry land and water. If this doesn't get your adrenalin pumping then the thrill of a 192-metre bungee jump from Auckland's Sky Tower will; and for a unique and exhilarating way to explore the city limits why not jump on the back of a Harley Davidson for a tour of Auckland's best beaches and viewpoints with a group of gnarly Kiwi bikers?

Day 02

Auckland to Waiheke Island 10 nautical miles

Located just off the main coastline, Waiheke Island is the 'Hamptons' of Auckland and has a growing local food scene, stunning white sandy beaches, and an eclectic art scene. Those with a passion for wine can also enjoy Waiheke Island's wineries where you will find unique and high-quality New Zealand wines based on Cabernet Sauvignon, Merlot, Malbec, Cabernet Franc and Chardonnay grape varieties. Discover Mudbrick Vineyard, where handpicked fruit is nurtured from vine to bottle and the wines are carefully selected and grown from classic French varietals. Alternatively, head to Stonyridge Vineyard, nestled in a valley of olive trees, and for the scenery alone Te Whau Vineyard is worthy of a detour. Described as one of the most beautiful and dramatic places a vineyard has ever taken root, here you will find five star Chardonnay and Cabernet Sauvignon/ Merlot.

Day 03

Waiheke Island to Coromandel Peninsula 20 nautical miles

Lying just off the mainland, the Coromandel Peninsula is the perfect anchorage for all manner of watersports activities including kayaking, snorkelling, wakeboarding and waterskiing.

Days 04 + 05

Coromandel Peninsula to Great Barrier Island 35 nautical miles

Cruise for a couple of hours to the furthest reaches of the Hauraki Gulf where you will find Great Barrier Island. Visited by Captain Cook in 1769, the island was so named because it was believed to be sheltering the Hauraki Gulf from the worst storms of the Pacific. The Barrier is the largest island off the coast of New Zealand's North Island.

Day 06

Great Barrier Island to Poor Knights Islands 45 nautical miles

The subtropical reefs of Poor Knights Islands were rated one of the world's top ten dive sites by Jacques Cousteau. Fed by a warm current, the striking underwater caves, tunnels and arches formed from a chain of volcanoes that eroded millions of years ago are a haven for tropical fish rarely seen in New Zealand's largely temperate water. Here you will find sharks, coral fish, moray, stingrays, migrating whales, turtles and orca.

Days 07 + 08

Poor Knights Islands to Bay of Islands 35 nautical miles

Reminiscent of tropical Tahiti, the Bay of Islands is a paradise for those who love beaches. Known for its beauty and history, the archipelago is made up of 144 islands including Cape Breatt, the Purerua Peninsula, and Moturua Island. Venture ashore and try out your fly-fishing skills on huge brown and rainbow trout in the vast rivers of Motu and Tongariro; try your hand at sand-dune surfing in Cape Reinga; or explore the deeper and more remote waters where you will find numerous shipwrecks.

THERE ARE SEVERAL POPULAR CRUISING ITINERARIES FOR NEW ZEALAND, INCLUDING THE BEAUTIFUL BAY OF ISLANDS AND THE MARLBOROUGH SOUNDS, AND FOR THOSE SHORT OF TIME, YOU CAN'T BEAT AUCKLAND'S HAURAKI GULF



SILENCIO

Available to charter in New Zealand this winter season for prices from US\$175,000 per week, the 50m (164') sailing yacht *Silencio* offers a sumptuous interior and outstanding outdoor spaces. Accommodating 12 guests in five beautiful staterooms that embody the perfect combination of tradition and modernity, her spacious full-beam master-suite saloon can be converted into a double guest stateroom, and her two twin cabins include Pullman berths that are perfect for children.

From the crisp linens and leather accents to the refined neutral colours and cherrywood interior, *Silencio's* sumptuous and ergonomic living spaces define effortless elegance. Despite her immaculate style, *Silencio* allows for all manner of relaxation and fun when on board with spacious lounging areas in the sun and shade, fantastic audio-visual equipment, and an array of watersports equipment.

Her deck areas include a typical luxurious 'Perini style' aft cockpit with protected alfresco lounging and dining ideal for hosting family and friends. On the fly bridge, the large sunbathing area is also suitable for alfresco dining as well as lounging in the sun.

With five-star service provided by a professional crew of nine, including an award-winning chef, a charter on board *Silencio* through the exciting waters of New Zealand promises to be a mix of fantastic hospitality with extremely competent and thrilling sailing.

For more information on chartering Silencio, or any other yacht in New Zealand, contact your nearest Camper & Nicholsons charter broker, see page 10.



RECOMMENDED ITINERARY

—

South Island's Marlborough Sounds

Day 01

—

Picton to Motuara Island 18 nautical miles

Located on the north-eastern corner of South Island, the Marlborough Sounds are noted for their scenic beauty and abundance of bird and marine life. Year round sunshine and a diverse natural landscape of extensive coastline (some 1,500 kilometres, or 20% of New Zealand's coast) make the area one of the premier cruising grounds in the world. A collection of ancient sunken river valleys, the Sounds are made up of three main bodies of water: Queen Charlotte, Kenepuru and Pelorus Sound.

Nestled at the head of the Queen Charlotte Sound, the small marine and coastal town of Picton harbours its beauty between the valleys and is a popular place to start your charter through the Marlborough Sounds.

Cruise on to Motuara Island, where Captain Cook stood and declared that the islands of New Zealand belonged to Queen Victoria. Today Motuara is a native bird sanctuary and can only be reached by boat. The predator-free sanctuary makes for ideal forest walks among native wildlife including blue penguins and melodic bellbirds.

Day 02

—

Motuara Island to Pelorus Sound 35 nautical miles

The remote Pelorus Sound has a number of wildlife sanctuaries, including Tiro and Chetwood Islands. Pass through Pelorus Sound and the surrounding valley, and cruise on to Tennyson Inlet. Take a kayak to explore the rocky coastline.

Day 03

—

Pelorus Sound to D'Urville Island 40 nautical miles

Separated from the mainland by a narrow, tidal channel, D'Urville Island has stunning scenery ranging from towering mountains to tranquil bays and coves. Step ashore and hike to the peaks of the island for sweeping views over the Marlborough Sounds. Back on board, the waters are a haven for fishing enthusiasts. Harvest fresh seafood and have your chef cook up a veritable feast on board accompanied by some fine local wine. Vinophiles swoon over Marlborough's Sauvignon Blancs, the perfect accompaniment to freshly caught seafood.

Day 04

—

D'Urville Island to Abel Tasman National Park 35 nautical miles

Cruise across Tasman Bay to Abel Tasman National Park with dolphins accompanying you along the way. Explore the National Park's magnificent bush and beaches with a coastal walk, then step ashore to discover Tonga Island's seal colony. For those with a real sense of adventure, the park provides ample opportunity for sea kayaking, rock climbing, white-water rafting and mountain biking.

Day 05

—

Abel Tasman National Park to Nelson 25 nautical miles

Disembark in the city of Nelson. From here you can explore the surrounding wineries scattered around the Moutere Hills and the Waimea Plains.

The ultimate sea safari

Indonesian tradition meets western luxury aboard the 65m (214')

Lamima. Based in the magnificent seas of **Eastern Indonesia**, Lamima is the largest wooden sailing yacht in the world and is yours to explore the remote Indonesian archipelagos in ultimate style

—
by **Miriam Cain**

Visit Komodo, Sumba, Banda, Flores, and the remote Spice Islands with Lamima and see the dramatic landscapes, coastlines and natural history of this magnificent archipelago. As well as unrivalled cultural and historical interest, these areas are surrounded by the richest seas in the world and offer superlative diving, snorkelling and adventure. Of the 17,000 plus islands in the Indonesian archipelago, 16,000 are uninhabited and Lamima can deliver you to pretty much any of them. Cruise around the wild jungles of the remote Raja Ampat archipelago, or set a course for the Komodo archipelago, one of Indonesia's truly undiscovered gems.

Begin your adventure on the popular island of Bali. The most developed of the islands, it is also where most international flights land, and has plenty of hot spots to keep you entertained for a few nights ashore before stepping aboard Lamima for your yachting adventure. Often referred to as the Asian Ibiza (though perhaps with a more wholesome beat), it is the place to acclimatise to the colourful Indonesian culture. Head up to the hilltop town of Ubud where you will find health-food cafés, ancient archaeological sites, coconut groves, lush rice paddies, and spas offering holistic treatments and remedies.

The unhurried pace of life on neighbouring Lombok is far removed from the bustle of Bali. The island remains comparatively undeveloped, with traffic-free roads, white beaches and deserted bays. Lombok is, however, changing, as an international airport opened a few years ago, bringing with it boutique hotels and other attractions. From Lombok it is just a short hop across to the three Gilis - Gili Trawangan, Gili Meno and Gili Air. Here you can spend another few days ashore at one of the boutique hideaways.

From Bali, or Lombok, the best form of transport to access Lamima at anchor in the remote Indonesian archipelagos of Raja Ampat or Komodo is by private plane. Once aboard there are numerous islands to wend your way around, and the following itineraries are just a tiny sample of all that these exotic and exciting cruising grounds can offer.

SEE THE DRAMATIC
LANDSCAPES,
COASTLINES AND
NATURAL HISTORY
OF THIS MAGNIFICENT
ARCHIPELAGO ABOARD
THE STUNNING
PHINISI-STYLE
SUPERYACHT LAMIMA



LAMIMA

— Offering the charm of an Indonesian two-masted phinisi but with the additional opulent luxuries of modern yacht design, Lamima is a nautical masterpiece. The yacht is the vision of esteemed yacht designer Marcelo Penna, who wanted to create a vessel that combined traditional Indonesian design with contemporary superyacht decadence. In 2012 the boat builders of Sulawesi, therefore, skilfully set about constructing what would become the

world's largest wooden sailing yacht.

Lamima's stunning interior is contemporary yet welcoming. Beautiful Asian influences are apparent in her artwork, furniture and fittings. Indoor spaces are open and relaxing, and she comfortably accommodates 14 guests in seven large staterooms, all of which have ensuite bathrooms.

On deck there is ample space for sunbathing, perfect for those looking to relax. Forward of her salon lies an inviting alfresco dining and lounging

area shaded by a fabric bimini, just the place for eating fresh fish (caught especially for you by her master fisherman) or unwinding with a massage or yoga lesson under the calming instruction of the yacht's qualified yoga instructors and pijit massage therapists.

Lamima also has plenty to offer those looking for a bit of adventure. A Padi-diving centre, she has two Padi instructors on board - ideal for beginners or advanced-level divers wishing to explore the phenomenal and

Above

— The 65m (214') Lamima is the largest wooden sailing yacht in the world

bio-diversified waters of Southeast Asia.

Also on board is an expert tour guide, whose deep understanding of the landscape - as well as local customs, culture and folklore - has led him to work with *National Geographic*. Wherever you end up, his legendary tales promise to give you a colourful insight into these fascinating lands.

For further information on chartering Lamima, or any other yacht in Indonesia, contact your nearest Camper & Nicholson's charter broker, see page 10.

The Raja Ampat Islands

Lying off the north western coast of New Guinea, the Raja Ampat archipelago comprises four main islands and more than 1,500 islets. Largely uninhabited, the peaceful waters are a haven above the water but it is beneath the surface that they really come to life. A mecca for divers worldwide, its blazing reefs of coral are home to the highest recorded marine biodiversity on earth and scientists have catalogued more than six times as many coral species in just a few acres as live in the entire Caribbean Sea.

— **ITINERARY**

Day 01

— **Sorong to**

Wayag archipelago *100 nautical miles*

Join Lamima in West Papua and cruise through the Dampier Strait to the Raja Ampat archipelago. Dive with manta rays in the plankton rich waters near Arborek Island, and step ashore to discover the forest of Sawing Rai, accompanied by Lamima's on-board tour guide.

Days 02 + 03

— **Wayag archipelago**

Spend the next few days cruising through the Wayag archipelago, dropping anchor at any given time. Jump in

and discover the varied coral gardens beneath the water. The marine life is so rich and diverse that much of it is still unclassified by scientists. Take the kayak ashore and climb the Wayag Peak for sunset views over the surrounding islets.

Day 04

— **Wayag archipelago to** **the Yeben Islands**

52 nautical miles

The Yeben Islands are made up of limestone pinnacles and cliffs that tower over secluded inlets. They are also surrounded by shallow waters that are ideal for kayaking and snorkelling. Spend the afternoon lounging on one of the many white sandy beaches that fringe the islands.

Days 05 + 06

— **Wayag archipelago to** **Misool**

140 nautical miles

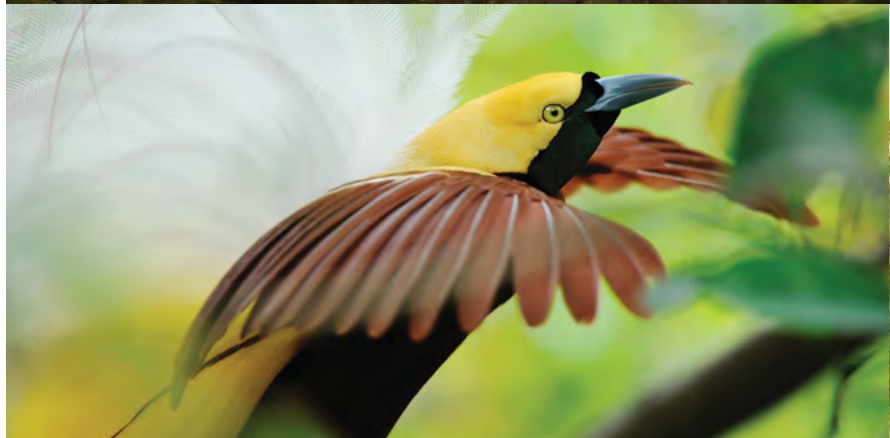
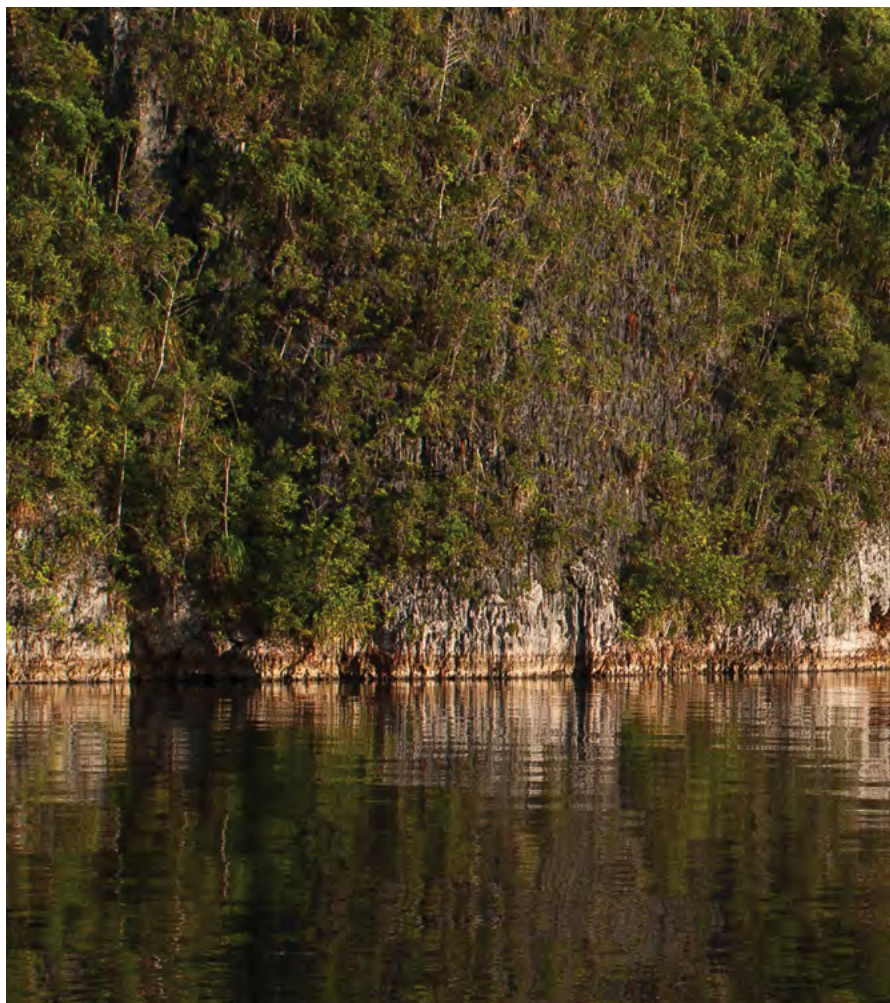
Dine on board while Lamima cruises towards the southern waters of the archipelago. Made up of islands and islets, Misool is another mecca for divers. Here you will find the pygmy seahorse swimming among the vibrantly coloured coral.

Day 07

— **Misool to Sorong**

77 nautical miles

Head towards Sorong for disembarkation, dropping anchor along the way in secluded coves to enjoy your final dip.





Komodo and her islands

The remote Komodo archipelago is ideal for an alternative or longer cruise aboard Lamima. Begin and end your charter in Flores and discover the islands of Sabolon, Rinca, Pantai Merah, Padar, Batu Muncul, Banta and the island of Komodo itself.

—

ITINERARY

—

Days 01 + 02

—

Flores to Sabolon

37 nautical miles

Board Lamima in Flores and discover the Komodo National Park. The sea surrounding the islands in the Komodo archipelago offer spectacular diving. Jump in and discover waters teeming with manta rays and sea turtles. Ashore, a hike will afford views over the Komodo Park. Spend a day discovering Mount Kelimutu and its three crater lakes. Back on board, cruise past the north-eastern coastline of Komodo to Sabolon Island and step ashore to discover the deserted beaches that line the shore.

Day 03

—

Sabolon to Gili Lawah Darat & Gili Lawah Laut

17 nautical miles

The water temperature

and currents in the Komodo archipelago make for great pearl growing grounds and there are a number of pearl farms that welcome visitors.

Day 04

—

Gili Islands to Komodo Island

19 nautical miles

Jump in and snorkel and swim in the waters surrounding Komodo Island before relaxing on the world-famous pink sands at Pantai Merah whilst your crew prepare a picnic.

Day 05

—

Komodo Island to Padar Island

11 nautical miles

The crystal clear waters surrounding Padar Island offer numerous opportunities for kayaking, water-skiing, diving and snorkelling. Alternatively, once ashore you can hike through lush rainforest for spectacular views over neighbouring islands, spotting wild boar, monkeys and all manner of exotic bird life along the way.

Day 06

—

Padar Island to Rinca Island

31 nautical miles

Escorted by Lamima's tour guide, take a hike on Rinca Island to see the Komodo dragons in their



ESCORTED BY LAMIMA'S TOUR GUIDE,
TAKE A HIKE ON RINCA ISLAND TO
SEE THE KOMODO DRAGONS IN THEIR
NATIVE HABITAT



native habitat. Despite being an endangered species, there are over 5,000 Komodo dragons on these islands. Measuring up to 11 feet in length, these beasts are carnivorous and can eat up to 80 percent of their body weight. An experienced guide is therefore essential to avoid becoming a tasty snack!

Day 07

—
Rinca Island to Batu Muncul

12 nautical miles

The calm waters that lap the island's stunning crescent shaped beaches are ideal for watersports. Alternatively, the marine life under the surface provides further diving and snorkelling opportunities.

Day 08

—
Batu Muncul to Banta Island

12 nautical miles

The waters surrounding Banta Island, which lies just outside the Komodo archipelago, teem with giant turtles and manta rays and are worth a visit.

Days 09 + 10

—
Banta Island to Flores

37 nautical miles

Back on board, cruise towards Pulau Sebayor for a final night's anchorage before heading towards Flores for disembarkation.



Picture the scene

SEA+I talks to art advisor **Carla Pinto**, from the London-based art gallery **Gladwell & Patterson**, on navigating the complexities of the art market and its current trends



SEA+I - Lets start with the basics. What advice would you give a yacht owner when selecting art for their boat?

Selecting art for your yacht is no different from choosing art for your home. Go with your heart and always acquire the best example of an artist's work within your budget. We curate art collections for clients based on an overarching strategy that will maximise the value, quality, coherence and significance of the art - as well as the enjoyment for the client. Whether the motivation is passion, investment, or both, building a collection should be a fun and exciting process.

Should art come first or should it follow the design of the yacht?

In our experience, it is ideal if the design of the vessel's interior can flow around the art. However, with careful thought one can introduce artworks to an existing layout at any stage. If possible, artwork should be considered early in the internal design and pieces can be sourced or commissioned especially to complement a chosen strategy.

What differences have you seen in art collections on board compared to land-based collections?

We have seen an upward shift in the quality of art that is displayed on board. Most yacht owners appreciate that their yachts are floating galleries and today some of the world's best masterpieces are circumnavigating the globe.

What are the current trends that you are seeing in art and how do you believe they adapt to the world of superyachts?

There are in the main two types of art that can regularly be seen in private collections both at home and on board: classic paintings and drawings of marine landscapes and boats, and modern and contemporary art collections containing paintings, photographs and graphics. There are also, of course, sculptures and installations.

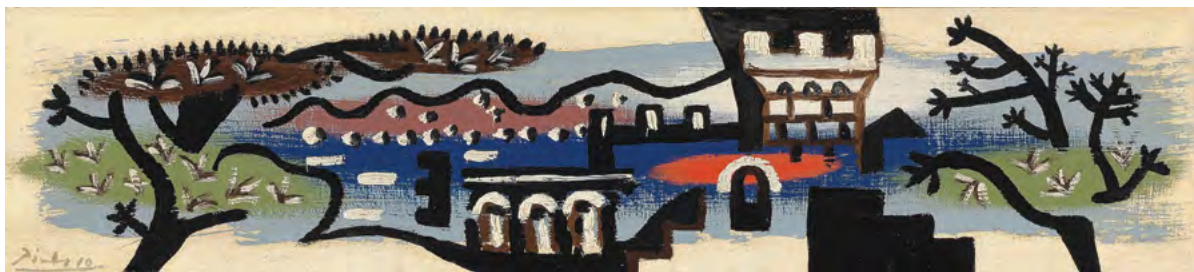
Art is a very important asset and in recent years it has become widely used as an investment opportunity because of the scarcity of good examples. As this trend grows Gladwell & Patterson provides tailored research and

Above

—
The Golden Fleece by **Derek G M Gardner** (1914 - 2007) oil on canvas, signed (61cm by 91cm)

Opposite

—
Esquisse de fleurs by **Renoir** (1841 - 1919) oil on canvas, painted circa 1910 - 1914, stamped with signature 'Renoir' (43.2cm by 45.1cm)



market analysis that empowers collectors and investors to make prudent decisions about their art. Using a full range of resources, from custom indices, industry databases and historical auction data, we deliver research on art trends and developments based on our 260 year's of experience of the market.

While the trend continues to acquire high-value works of art for yachts, the need to be assured of their intrinsic value is paramount and the condition of the painting is critical to this.

Who are the most popular artists of the moment?

At our gallery we have our headline artists, who include Picasso, Renoir, Sisley, Dali and Monet, to name a few. There are many other artists of similar quality but who are not as well known and we champion those too - they are well known to us and our clients and one day will be recognised by a much wider audience. Works by Warhol, Bacon, Richter and Rothko are also very much in the headlines at the moment.

With the proliferation of museums, fairs and the sheer amount of work now being made, shown and sold, the art world has changed substantially over the past 50 years. What have been the most important shifts in art?

We have witnessed a vastly increased internationalisation of art and the art world, which can largely be accounted for by better communication, which in the main is due to the internet. The contemporary art world has shifted to become a fully-fledged member of the entertainment sector. Along with fashion, film and pop stars, artists have become celebrities in themselves.

What can you do for an owner that they cannot do themselves?

The art market changes rapidly and provides ever-increasing opportunities for art collectors, but these changes also present possible pitfalls. As experts in our field we can advise what to avoid in order to minimise risk and maximise potential. It is not only new buyers who require comprehensive, specialist guidance on the current market. Sophisticated buyers also use our services in order to understand better the conditions of today's market and access the opportunities we can provide through our contacts. When referring to investment pieces great dedication, expertise and experience is required in searching for established names or emerging artists. Advice from those with long-standing experience in art offers a sensible approach and finding a trustworthy advisor is an essential part of this process and can ultimately make art a source of great pleasure and often sizeable financial gains.

And finally, in recent years there has been a positive reappraisal of the benefits that collecting art affords - financial and non-financial. What do you believe is your client's motivation?

An entirely new generation of collectors has entered the arena in recent years, while existing collectors are in a position to reappraise their assets in this new context. The gallery's clients have a range of motivations, from wanting to benefit from the emotional and social value of art, to seeking portfolio diversification and investment returns, they all have specific and personal requirements. No matter what the client's motivation - we stay true to two things - the true value of good-quality work and the need to buy what you like.

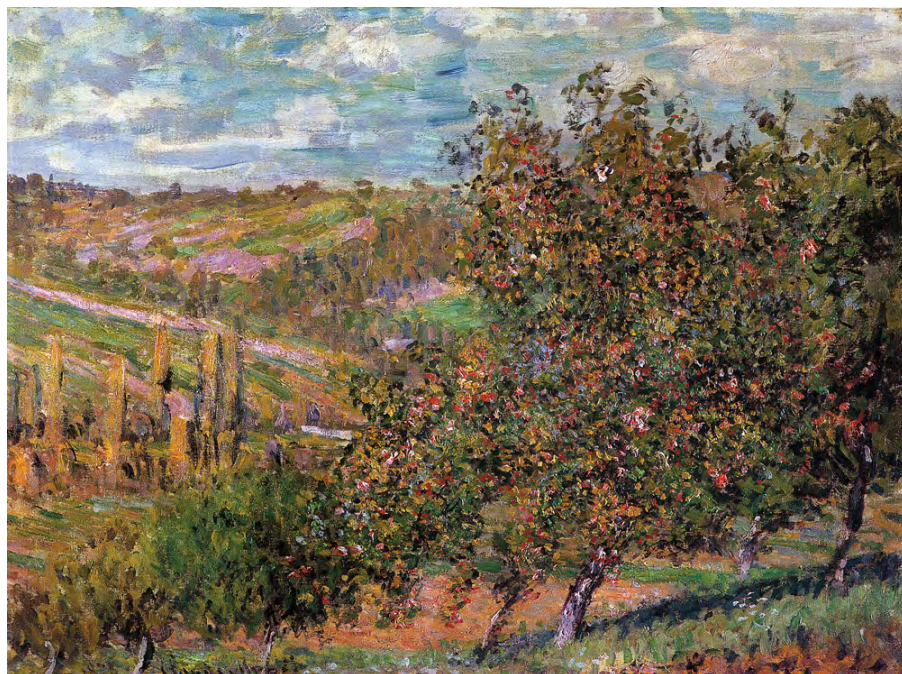
See the next issues of SEA+I for advice on how best to display art on board, and the legal and logistical issues involved.

THE EXPERTS

— Gladwell & Patterson is an internationally renowned gallery with a proud history that can be traced back to the mid-18th century. Royal Warrants were held by Gladwell & Company to Queen Victoria, Queen Alexandra, King George V and Queen Mary.

Today, Gladwell & Patterson's range of works spans the Victorian era, through the Impressionists and includes many modern day masters.

Examples of their fine paintings can be viewed during the Monaco Yacht Show with Camper & Nicholsons and previewed online at www.gladwellpatterson.com. Alternatively you can visit their gallery in London or see them at any of their international exhibitions.



Left

—

Pommiers en Fleurs
by **Monet** (1840 - 1926)
oil on canvas,
signed & dated 1878
(54.5cm by 73.5cm)

Schooners Racing by
Ronny Moortgat
(1951 -) oil on canvas,
(101.6cm by 71.1cm)

Opposite

—

**Paysage de Juan-les-
Pins** by **Picasso**
(1881 - 1973) oil on canvas,
painted in 1925,
signed Picasso
(13.5cm by 57cm)





The spirit of innovation, the relentless drive to improve and optimise, to accelerate and to take the initiative, is more apparent today perhaps than at any other time in human history. The yachting industry is a fine example, and builders are not averse to using grandiose words such as **innovative**, **revolutionary**, and **cutting edge** in their advertising. But how much of this is just marketing hype, and how much really reflects the shipyards' efforts to bring meaningful changes to the way that yachts are built?

Game changers

By David Seal

Sales Broker for Camper & Nicholsons International

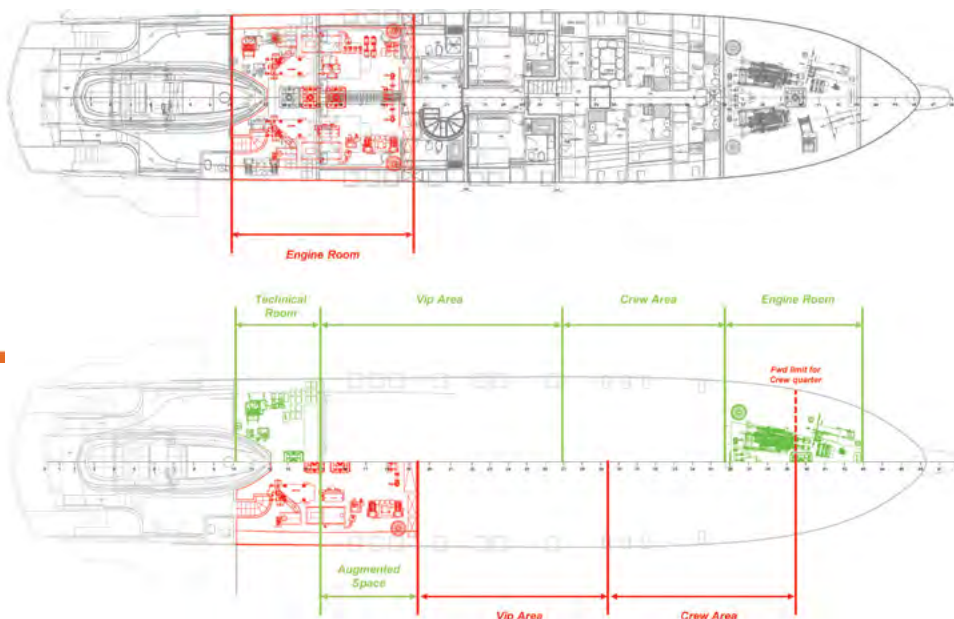
The WIDER shipyard in Italy believe that they really do qualify as game changers in yachting history, as their 150' and 165' superyachts currently in construction in Ancona offer a diesel electric propulsion system that they claim is so innovative that it will revolutionise the way people use their yachts. Now let me just say that diesel electric propulsion is not revolutionary. It was first used on a Russian tanker called Vandal in the Caspian Sea over one hundred years ago and has since become the favoured form of propulsion for many military craft in naval fleets around the world. The same is true for many cruise ships, which also opt in favour of diesel electric power due to the reliability and versatility of the system, running both their propulsion and hotel power requirements from the same electricity source.

Yacht builders do appear to have been reluctant to adopt this form of propulsion though, and a closer look at the reasoning and studies behind WIDER's project make me believe that they really are onto something exciting.

Let's start by considering the layout of the yacht, and the space that is taken up by a traditional engine room. I remember well from my time working at the Ferretti shipyard that they prided themselves on their engine rooms. Norberto Ferretti used to talk about this at length. It is all very well having a huge master stateroom and generous guest areas, he used to explain, but what is the point if the engine room is too small to work in? What is the point if you can't get access to the generators when you need to service them? What is the point if you can't use the yacht because of one compromise too many in the

This page, from top

—
A traditional engine room layout where the space is taken up by a traditional engine room; the Wider layout





engine room? He was right, of course; traditional engine rooms need to be spacious. Traditional engine rooms need sufficient space for two engines, connected to long shafts, connected to propellers; and you really can't vary the position of the engines that much. A traditional engine room will take up a big chunk of the yacht, and the best chunk at that.

By using diesel electric propulsion WIDER have completely freed themselves from these restraints. The yacht is driven by Azipods for a start, just like most cruise liners. The Azipods are driven by electric motors, so power is not delivered to them mechanically through rigid shafts, but electrically through flexible cables. This means that the power source does not have to be positioned in the middle of the yacht, taking up the beamiest and most voluminous area of the vessel. It can be positioned anywhere, and WIDER have wisely decided to position it in the bow, out of the way. The result of this is a forward engine room that is easily accessible by the crew, and a power management room mid ship that takes up a fraction of the space that traditional engine rooms consume. Each area is sufficient for service work to be performed in comfort, but the owner and guests benefit from significantly increased cabin space and a tender garage/spa area that most 150' yachts could only dream of.

The choice of a power source is also an interesting topic, and another example of how WIDER have ignored conventional thinking. Simply put, a traditional yacht has two sources of power; the engines to power the propulsion, and the generators to power the appliances. The engines have variable speeds, they will consume more when the yacht accelerates and less when it slows down, and they need servicing regularly. The generators on the other hand run at a fixed speed and give a fixed output of power. Sometimes this may not be sufficient for all of the appliances, and sometimes the power is too great, which is also not a good way to run the gensets. The generators too need regular servicing.

WIDER have a totally different system, and the benefits are noteworthy. Four MAN engines are located in the forward engine room and connected to alternators to create four variable speed generators. Power is sent from these generators to two lithium polymer battery banks through frequency drives that perform some very important functions. The frequency drives that lead to the Azipods can increase or decrease the speed of the propellers, so that they can run at full speed or as low as 0.1 rpm. Think what that means for the yacht owner; he can run the yacht at full speed without revving the engines and consequently burning large quantities of fuel, simply by consuming power from the batteries that were charged by engines running at whatever was the most efficient speed at the time. If he wishes, he can

run in total silence by using just the batteries, or otherwise he can run the engines to keep the batteries charged, but either way he avoids the noise, vibrations, and emissions that are inevitable in even the finest yacht with a traditional propulsion system.

Another important feature of the frequency drives is their function as voltage stabilisers. At best voltage spikes can be irritating on a yacht, and at worst they can be downright dangerous. A close friend of mine was a captain on a series of large production yachts built by a very reputable European builder. He regularly complained about the money that he had to spend replacing light bulbs that popped with alarming frequency. Fitting a shore power converter helped greatly, since the equipment served not only to make the yacht compatible with various shore power frequencies around the world but also to stabilise the voltage. The frequency drives on the WIDER 150' serve exactly the same purpose; they act as a built-in shore power converter and also convert the power from AC to DC and back to AC again, supplying a 'cleaner' and more stable voltage to the yacht.

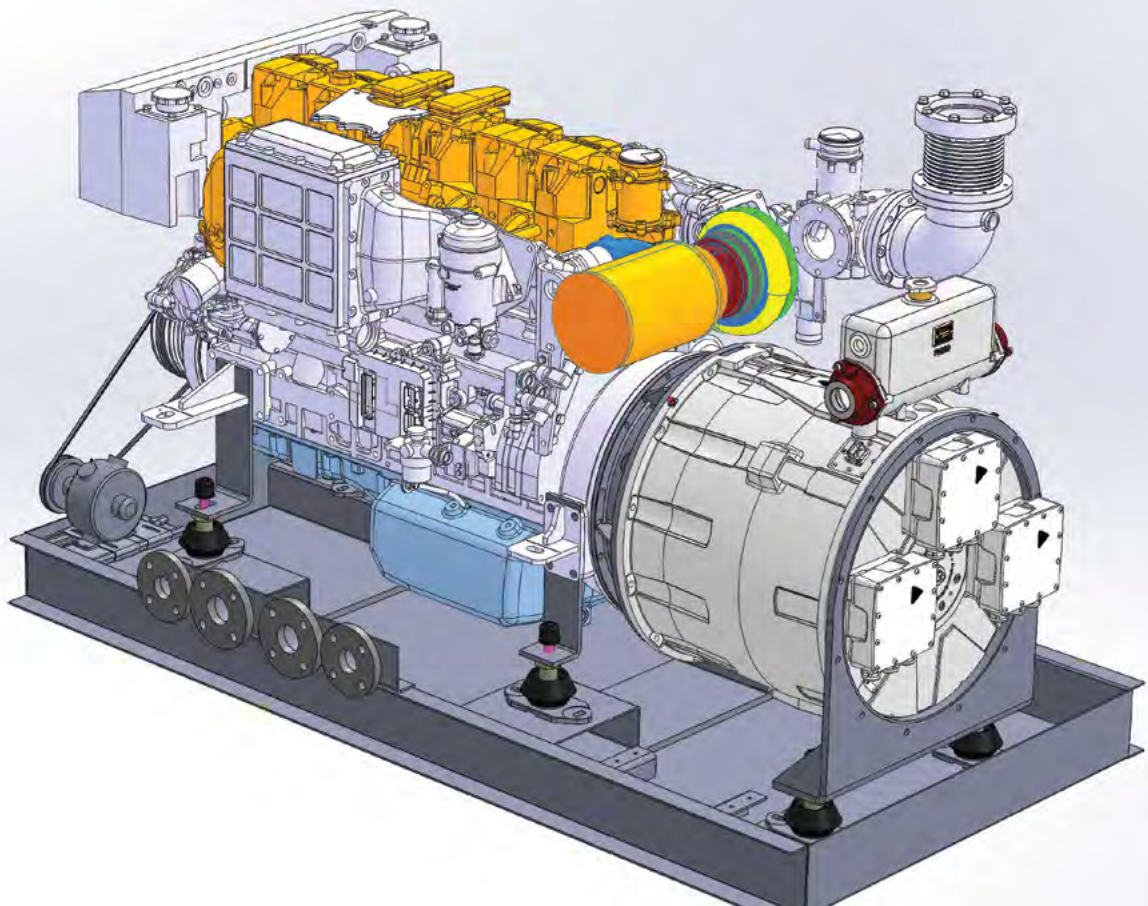
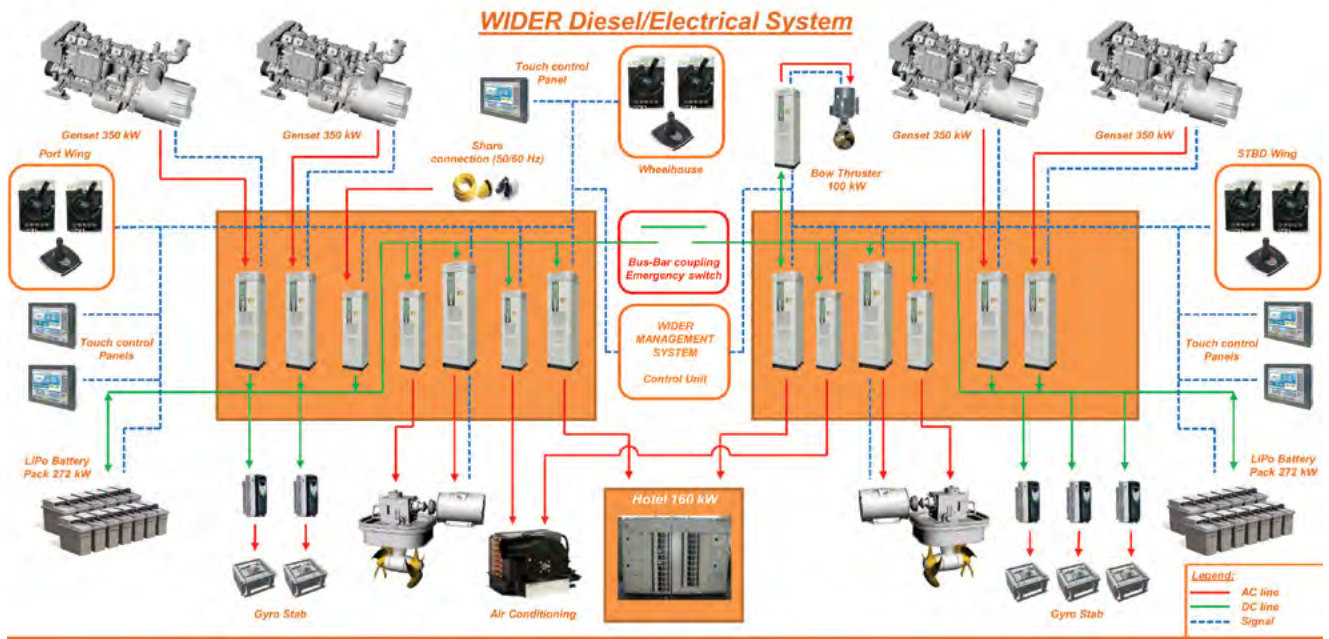
Everything is controlled by a Power Management System that automatically selects how many engines should run, at what speed, and transfers power from the battery banks, shore power, or engines depending on the safest and most efficient option. Once again, think what this means for the owner of the yacht and for his captain. By selecting the number of engines that run, and only using them at their optimum revs not only is there a notable saving in fuel, but also in service costs since the Time Between Overhaul (TBO) is significantly increased. The owner and Captain can also select the operation mode of the yacht by using a touch screen panel, so if he wants a silent night at anchor without running the generators he can choose night mode, if he wants to run with zero emissions then he can do so, or if he needs greater performance he can choose that too.

The WIDER engineering department has also gone to great lengths to ensure abundant redundancy measures on board, dividing the vessel in two mirrored systems, so that if one component fails, its twin will kick in. Once again, this is activated automatically by the Power Management System.

In my experience yacht owners welcome innovation that will make a meaningful improvement to their enjoyment of the yacht. Captains on the other hand tend to be more skeptical, which is understandable since they are usually left to pick up the pieces if things go wrong. WIDER recognise this, and have taken a long time in selecting suppliers for the main components. Four MAN engines will be installed in the bow, producing a total of 350KW each and charging lithium polymer

Above

The WIDER 150' runs with Azimuthal pods, further reducing drag and increasing efficiency



batteries produced by ES Technologies specifically for a marine application. It is worth noting that these batteries have a warranty that lasts 10 years or 5000 cycles, whichever comes first. The frequency drives are supplied by Emerson, a company based in Holland with an international service network, and electric motors and alternators come from the award winning Finnish company Visedo.

With the depth of research that has gone into this project, and growing pressure on manufacturers of all kinds of transport to reduce emissions, the future looks bright for the WIDER shipyard. The innovation they offer is really no more than the application to yachting of a technology that has been used for decades by Her Majesty's Royal Navy. And if it's good enough for Her Majesty...then it's good enough for me.

Above
—
The WIDER Diesel/
Electrical system



THE SMALLEST THINGS LEAVE THE GREATEST IMPRESSION.
A superyacht marina is your driveway. A white sandy beach is your backyard.
Welcome to Christophe Harbour. Approved for Citizenship by Investment.
+1 843.501.2227 | ChristopheHarbour.com



**CHRISTOPHE
HARBOUR**
ST. KITTS

Obtain the Property Report required by Federal law and read it before signing anything. No Federal agency has judged the merits or value, if any, of this property. This is not intended to be a solicitation or offer for purchase in states and/or jurisdictions where registration is required. Prices, plans, products, and availability are subject to change without notice. Illustrations are artist's renderings only and may differ from completed product. Use of recreational facilities and amenities may be subject to separate club membership requirements, payment of fees, and/or other restrictions.

Global office network

Antibes

+33 4 92 912 912
antibes@camperandnicholsons.com

Fort Lauderdale

+1 954 524 4250
fortlauderdale@camperandnicholsons.com

Geneva

+41 22 347 2708
geneva@camperandnicholsons.com

London

+44 20 7009 1950
london@camperandnicholsons.com

Miami

+1 305 604 9191
miami@camperandnicholsons.com

Monaco

+377 97 97 77 00
monaco@camperandnicholsons.com

New York

+1 212 829 5652
newyork@camperandnicholsons.com

Newport

+1 401 619 0075
newport@camperandnicholsons.com

Palm Beach

+1 561 655 2121
palmbeach@camperandnicholsons.com

Great Lakes

+1 586 690 8009
greatlakes@camperandnicholsons.com

Palma

+34 971 40 33 11
palma@camperandnicholsons.com



1782

Little black book

Camper & Nicholson's showcase some of the newest and most advanced yachts available on the brokerage market

See a comprehensive list of available yachts at www.camperandnicholsons.com





IT'S SHOWTIME

— With autumn just around the corner it would be fair to say the superyacht industry has had a good year to date, and for the Camper & Nicholson's team in particular this certainly rings true. On the brokerage side we are witnessing an increase in sales, with numbers up on this time last year, and our brokers have been involved in the successful delivery of a number of new yachts now cruising the high seas. On the charter side, the yachts in our charter fleet have experienced back-to-back bookings throughout the summer peak season for the first time since the GFC, while our retail division are in full 'all hands on deck' mode in the height of the season, with many clients who have left it late unfortunately finding everything fully booked.

2014 is proof that hard work pays off. Our brokers spent the first few months

going above and beyond for their clients, determined to find the best deals the market had to offer, and their perseverance has paid off with a high number of sales. There are of course still plenty of competitively priced deals available, and with the market in such rude health it looks as though the good times will continue to roll on throughout 2014. Our brokers know that it is of vital importance to keep their foot on the pedal and this is why they continue to go that extra mile for our clients, so that they are in a position to benefit from such positive market trends. The following selection is just a showcase of some of the newest and most advanced yachts available to purchase through Camper & Nicholson's - more can be found online at www.camperandnicholsons.com.

For further information please contact your Camper & Nicholson's broker, see page 10



Ocean Victory

75.75m/248'6

De Vries Feadship, 2009

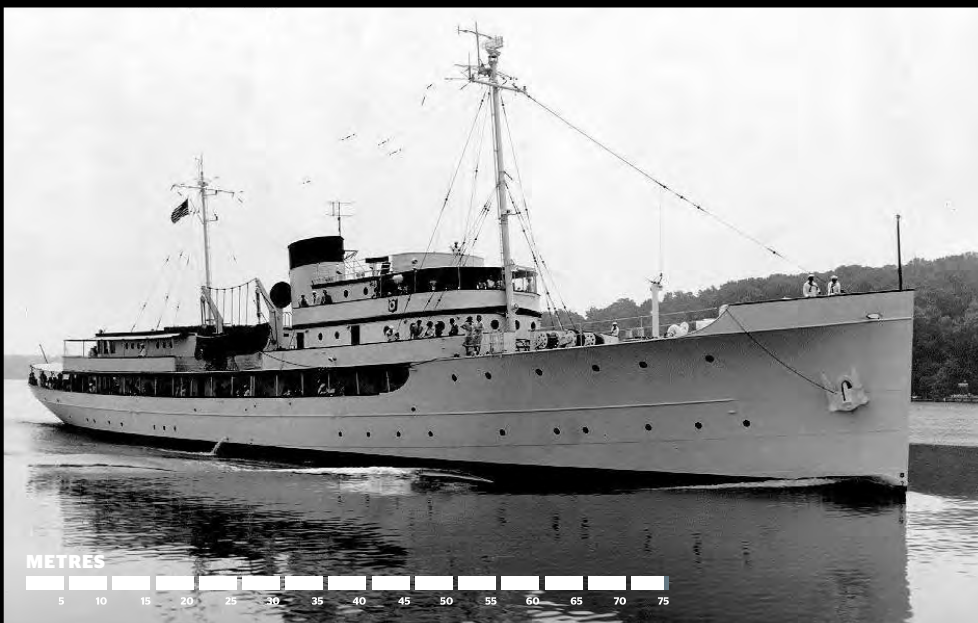
€120,000,000

Contact

Alex Lees-Buckley

+377 97 97 77 00

aleesbuckley@camperandnicholsons.com



Williamsburg

74.3m/243'9

Bath Iron Works, 1930

US\$55,500,000

Contact

David Seal

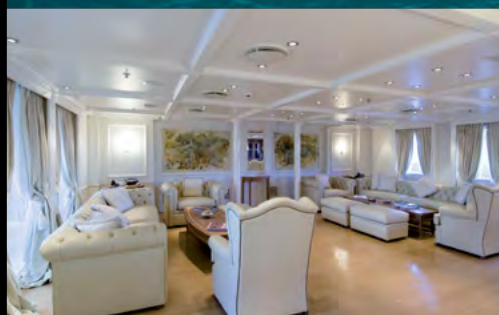
+377 97 97 77 00

dseal@camperandnicholsons.com





METRES



RM Elegant

— 72.4m/237'6

— Landa Nafs, 2005/2012

— Price on application

Contact

Adam-Michael Papadakis

+44 20 7009 1950

apapadakis@camperandnicholsons.com



METRES



Polar Star

— 63.4m/208'

— Lürssen, 2005

— €55,000,000

Contact

Jeremy Comport

+33 4 92 912 912

jcomport@camperandnicholsons.com





METRES



Baraka

—
58m/190'3

—
Proteksan Turquoise, 2010

—
€35,000,000

Contact

Charles Ehrardt

+33 4 92 912 912

cehrardt@camperandnicholsons.com

METRES



Cleopatra

—
56.73m/186'1

—
Amels, 1985

—
€13,000,000

Contact

Jean-Marie Récamier

+33 4 92 912 912

jmrecamier@camperandnicholsons.com





Tales

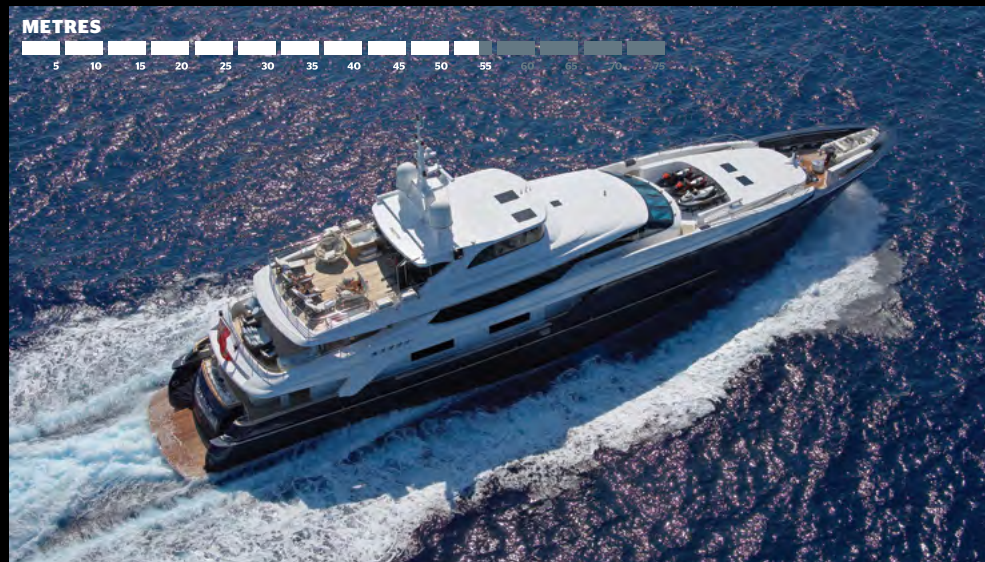
—
53.4m/175'2

—
Proteksan Turquoise Yachts, 2002

—
€15,000,000

Contact

James Rayner
+33 492 912 912
jrayner@camperandnicholsons.com



Burkut

—
53m/173'10

—
Baglietto, 2010

—
€27,000,000

Contact

Charles Ehrardt
+33 4 92 912 912
cehrardt@camperandnicholsons.com



DB9

—
52.2m/170'

—
Palmer Johnson, 2010

—
US\$31,000,000

Contact

Rytis Babravicius
+377 97 97 77 00
rbabravicius@camperandnicholsons.com





Remember When

— **48.77m/162'**

— Christensen, 2011

— US\$29,995,000

Contact

Michael Rafferty
+1 561 655 2121
mrafferty@camperandnicholsons.com

Andrew LeBuhn
+1 561 655 2121
alebuhn@camperandnicholsons.com



Princess Too

— **47.55m/156'**

— Leadship, 1999

— €17,500,000

Contact

Alex Lees-Buckley
+377 97 97 77 00
aleesbuckley@camperandnicholsons.com

Gaston Lees-Buckley
+33 4 92 912 912
gleesbuckley@camperandnicholsons.com



Yalla

— **47m/154'2**

— Heesen Yachts, 2004

— €18,750,000

Contact

Jean-Marie Récamier
+33 4 92 912 912
jmrecamier@camperandnicholsons.com





Pure One

— **46.20m/151'6**

— Arno Leopard, 2008

— €13,500,000

Contact

Jeremy Comport

+33 492 912 912

jcomport@camperandnicholsons.com

METRES



Wider 150 #2

— **45m/147'11**

— Wider, 2015

— €25,000,000

Contact

David Seal

+377 97 97 77 00

dseal@camperandnicholsons.com



METRES



Mystic

— **46m/150'11**

— CMB Yachts, 2010

— €13,500,000

Contact

Adam-Michael Papadakis

+44 20 7009 1950

apapadakis@camperandnicholsons.com

METRES





Perfect Persuasion

—
45.73m/150'
 —
 Oceanfast, 1997/2011
 —
 US\$8,000,000

—
Contact
 Jeremy Comport
 +33 4 92 912 912
 jcomport@camperandnicholsons.com



Bravado

—
44.9m/147'3
 —
 Abeking & Rasmussen, 2004
 —
 €21,500,000

—
Contact
 David Seal
 +377 97 97 77 00
 dseal@camperandnicholsons.com

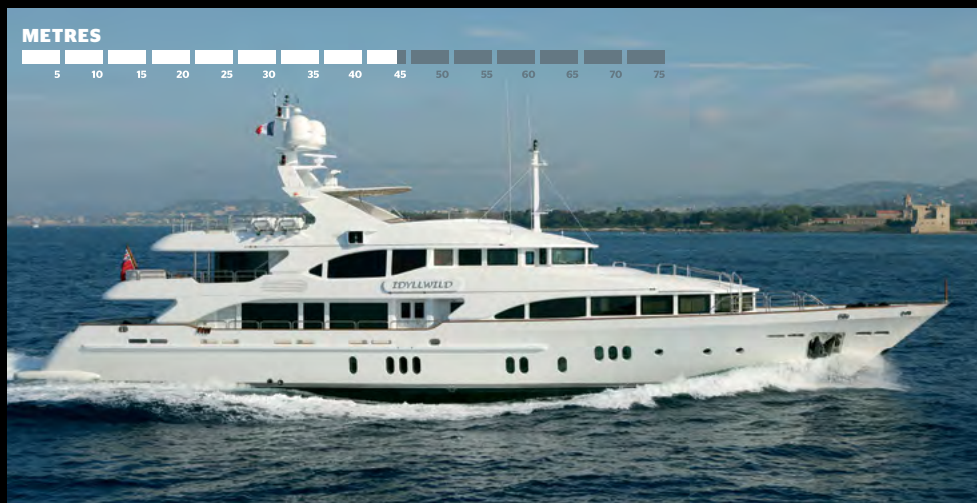


Dia's

—
44.2m/145'
 —
 Benetti, 2006
 —
 €9,900,000

—
Contact
 Jeremy Comport
 +33 4 92 912 912
 jcomport@camperandnicholsons.com

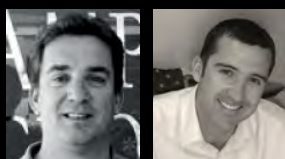
—
 Gaston Lees-Buckley
 +33 4 92 912 912
 gleeSBuckley@camperandnicholsons.com



Idyllwild

—
44.2m/145'
 —
 Benetti, 2005
 —
 €12,750,000

—
Contact
 Jean-Marie Récamier
 +33 4 92 912 912
 jmrecamier@camperandnicholsons.com



Green Voyager

—
43.9m/144'
 —
 Kingship Marine, 2014
 —
 €14,800,000

—
Contact
 Fernando Nicholson
 +1 305 604 9191
 fnicholson@camperandnicholsons.com

Simon Goldsworthy
 +44 20 7009 1950
 sgoldsworthy@camperandnicholsons.com



Axantha II

—
43m/141'
 —
 JFA, 2011
 —
 €14,950,000

—
Contact
 Rytis Babravicius
 +377 97 97 77 00
 rbabravicius@camperandnicholsons.com



Hana

—
43m/139'9

—
CRN, 2008

—
€12,950,000

Contact

Simon Goldsworthy

+44 20 7009 1950

sgoldsworthy@camperandnicholsons.com



METRES



METRES



CD Two

—
43m/141'

—
Nicolini, 1995/2010

—
€6,250,000

Contact

Jonathan Syrett

+34 971 40 31 11

jsyrett@camperandnicholsons.com



Forty Love

—
42.06m/137'11

—
West Coast Custom Yachts, 2003

—
US\$13,000,000

Contact

Bob O'Brien

+1 561 655 2121

bobrien@camperandnicholsons.com



METRES





CR-41

—
41m/131'2

—
Hakvoort, 2019

—
€20,450,000

Contact

Jeff Partin
+19545244250
jpartin@camperandnicholsons.com

Richard Higgins
+33492912912
rhiggins@camperandnicholsons.com



Nameless

—
41m/132'1

—
Mondo Marine, 2013

—
€19,500,000

Contact

Rytis Babravicius
+37797977700
rbabravicius@camperandnicholsons.com



Forever One

—
39.65m/130'1

—
Overmarine (Mangusta), 2007

—
€6,900,000

Contact

Fernando Nicholson
+13056049191
fnicholson@camperandnicholsons.com





Tanusha

—
36.58m/120'

—
Benetti, 2010

—
€9,750,000

Contact

Rytis Babravicius

+377 97 97 77 00

rbabravicius@camperandnicholsons.com



Sunglider II

—
36.45m/119'7"

—
ISA, 2006

—
€3,500,000

Contact

Charles Ehrardt

+33 4 92 912 912

cehrardt@camperandnicholsons.com



Mach One

—
32m/104'11"

—
Overmarine (Mangusta, 1999)

—
Price on application

Contact

Foulques de Raigniac

+33 4 92 912 912

fderaigniac@camperandnicholsons.com





Red Dragon

—
51.7m/169'7

— Alloy Yachts, 2008

—
€21,000,000

Contact

Simon Goldsworthy

+44 20 7009 1950

sgoldsworthy@camperandnicholsons.com



Silencio

—
49.8m/164

— Perini Navi, 2001/2012

—
€17,500,000

Contact

Jordan Waugh

+377 97 97 77 00

jwaugh@camperandnicholsons.com



Lulworth

—
46.3m/151'10

— White Brothers Southampton, 1920

—
€10,800,000

Contact

Mark Hilpern

+44 20 7009 1950

mhilpern@camperandnicholsons.com





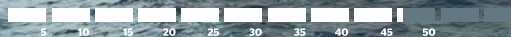
Wellenreiter

—
46.1m/151'2
 —
 Jongert, 2003
 —
 €12,500,000

—
Contact
 Alex Lees-Buckley
 +377 97 97 77 00
 alesbuckley@camperandnicholsons.com

—
 Gaston Lees-Buckley
 +33 4 92 912 912
 glesbuckley@camperandnicholsons.com

METRES



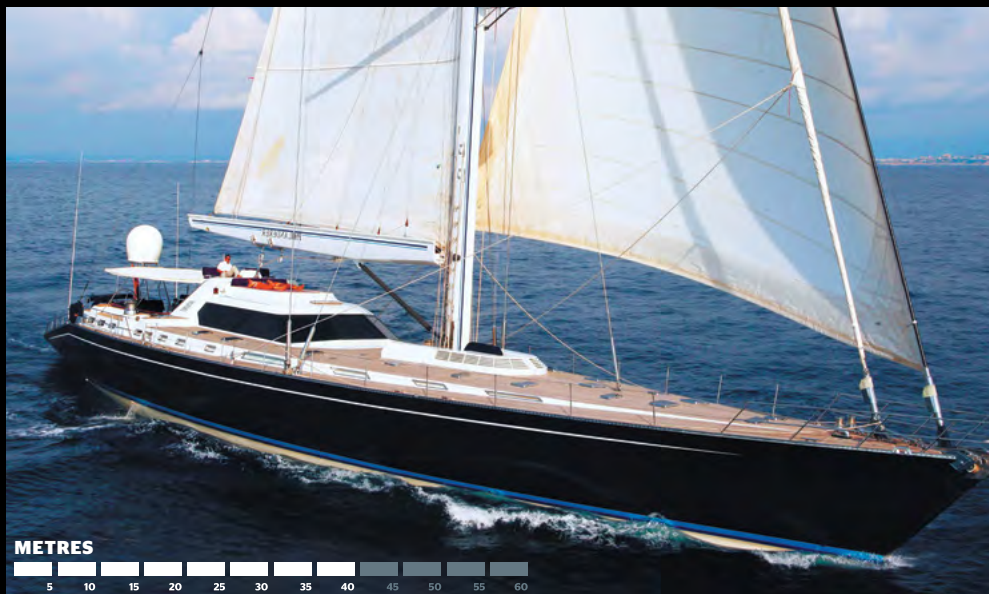
Passe Partout

—
42m/137'9
 —
 Jongert, 2001
 —
 €5,750,000

—
Contact
 Steen Christensen
 +34 971 40 33 11
 schristensen@
 camperandnicholsons.com



METRES

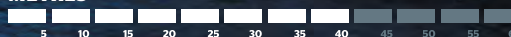


Philanderer

—
40.01m/131'2
 —
 Concorde Yachts, 1992/2009
 —
 €2,600,000

—
Contact
 Arne Ploch
 +34 971 40 30 11
 aploch@camperandnicholsons.com

METRES





MORE.

A love of the sea, an urge to constantly challenge its boundaries and an innate ability to predict the most avant-garde trends in yachting. This is WIDER. Our most fervent desire is to excite emotions and to create the unimaginable. Our enthusiasm is unquenchable. The result is a new face to superyachts: within WIDER 150's aluminium body beats a diesel-electric heart guided by a formidable intelligence that optimises energy and reduces consumption. Entire areas on board transform to offer the finest comfort available, such as the magnificent WIDER beach. All of this, and more.



WWW.WIDER-YACHTS.COM

INFO@WIDER-Y.IT

THE WIDER APP FOR IPAD DOWNLOAD

[HTTP://APPSTORE.COM/WIDERYACHTS](http://APPSTORE.COM/WIDERYACHTS)

ITunes

WIDER
NEVER ENOUGH

ULYSSE NARDIN

SINCE 1846  LE LOCLE - SUISSE



SONATA STREAMLINE

SELF-WINDING. PATENTED MANUFACTURE MOVEMENT WITH
SILICIUM TECHNOLOGY AND 24 HOUR ALARM AND COUNTDOWN.

TITANIUM CASE WITH CERAMIC BEZEL.

ULYSSE-NARDIN.COM

ULYSSE NARDIN SA - Le Locle - Switzerland
T. +41 32 930 7400 - info@ulyссе-nardin.ch